




The Institute

basil hetzel institute for translational health research

MONTHLY BULLETIN FOR TQEH RESEARCH COMMUNITY

# WINNING NEWS

[www.basilhetzelinstitute.com.au](http://www.basilhetzelinstitute.com.au)

Follow us 

## Dr Katharina Richter wins SA Tall Poppy Award



*Dr Katharina Richter (third from left) with other winners, who flank the Honourable David Pisoni MP and His Excellency the Hon. Hieu Van Le*

Dr Katharina Richter, who completed her PhD with the ENT Surgery group at the BHI in 2017, has been awarded one of 10 South Australian Young Tall Poppy Science Awards for 2018. These awards were presented to the winners in the Barr Smith Library Reading Room at The University of Adelaide on July 30th. The Australian Institute of Policy and Science initiated these Awards to recognise young Australians producing world-class scientific research of significant benefit to society, who also demonstrate great leadership potential.

Kati, who currently holds an early career fellowship from The Hospital Research Foundation, said "This is one of the highlights in my young academic career and it feels amazing to be acknowledged for my research and broad science communication activities."

The 2018 South Australian Tall Poppy of the Year will be named at the 2018 SA Science Excellence Awards which is being held on 10th August, as part of the broader celebrations of National Science Week (August 11-19).

Read more: article on [The University of Adelaide's Website](http://The University of Adelaide's Website).

# AUGUST 2018

## ISSUE 114

### IN THIS ISSUE

- p 3 News
- p 8 Student News
- p 10 Community Engagement
- p 11 General Information
- p 13 Work, Health & Safety
- p 14 Upcoming Events
- p 21 Publications
- p 24 THRF scholarships
- p 24 THRF News

### BHI SEMINARS

**Tuesdays 1pm**

Staff Seminars

**Wednesdays 12pm**

Invited External Speaker Seminars

**Thursdays at 1pm**

Postgraduate Student Seminars

### UPCOMING EVENTS

**BHI booth at Science Alive!**

Friday 3 - Sunday 5 August

**BHI Talking Heads Seminar**

Tuesday 18 September

**TQEH Staff Ball**

Friday 12 October

**TQEH Research Expo**

Thursday 18 & Friday 19 October

# BHI HUB

## From the BHI Facility Manager Kathryn Hudson

BHI Ground Floor  
Phone ext: 27427  
[kathryn.hudson@sa.gov.au](mailto:kathryn.hudson@sa.gov.au)



Over the past three months, I have summarised some points from The SA Health Respectful Behaviour Policy on team work, staff engagement, and constructive feedback. This month we look at some of the personal traits to foster respectful behaviours.

### Performance objectives and performance indicators demonstrating respectful behaviour:

1. effective team work, demonstrated by sharing best practice
2. working collaboratively, demonstrated by:
  - acknowledging the contribution of others
  - completing projects with others
  - listening and consulting with team members
3. listening to other's perspectives
4. effective leadership, demonstrated by:
  - role-modelling respectful behaviour to stakeholders, clients and staff
  - by taking prompt action to address respectful behaviour issues when they arise
  - ensuring continued focus on respectful behaviour at team meetings (as part of meeting agendas)
5. supporting team cohesion, demonstrated by:
  - not participating in gossip and discouraging gossip by others
  - encouraging and supporting team members to address their issues directly with the team-member involved
6. more effective management of the emotional dynamics of the situation, demonstrated by:
  - less conflict with colleagues
  - managing patient demand more calmly
  - managing presentations to colleagues more confidently
  - identify strategies to manage emotions

Next month I will focus on some conflict resolution strategies.

## From the BHI Communications Officer Rebecca Anderson

BHI Ground Floor  
Phone ext: 27345  
[rebecca.anderson@adelaide.edu.au](mailto:rebecca.anderson@adelaide.edu.au)  
Work days: 9-3pm Tuesday - Thursday



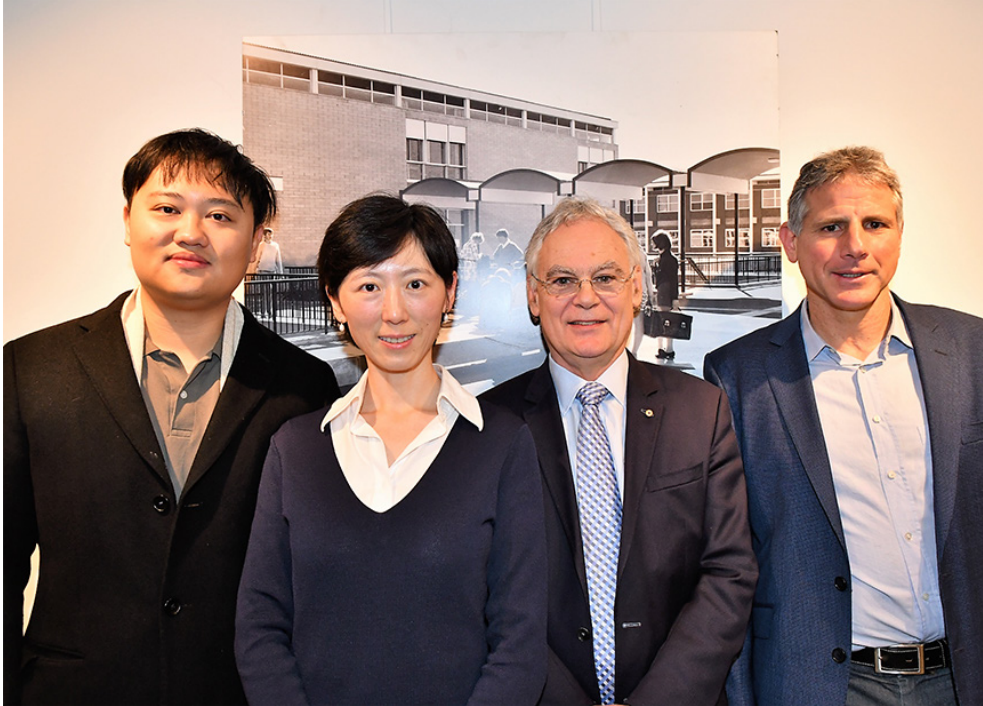
Kathryn and I would like thank the following people in advance for volunteering to help out at Science Alive! 2018, some for a repeat performance!

**TQEH Surgeons:** Shantanu Bhattacharjya, Martin Bruening (again), Mark Harris, Guy Maddern, Gian Prevost, Abdullah Rana, Markus Trochsler (again)

**BHI Researchers:** Sarah Bernhardt (again), Prue Cowled (again), Jo Dollard (again), Kevin Fenix, Amita Ghadge, Ha Nguyen (again), Beulah Panchatcharam (again), Mahnaz Ramenzapour, Kati Richter (again), Ashley Twigger, Rajan VEDIAPPAN (again), Joe Wrin (again)

# NEWS

## Flinders University Innovation Partnership Seed Grant Scheme



(L-R). Dr Kevin Fenix, Dr Linlin Ma, Flinders University's Deputy Vice-Chancellor (Research) Professor Robert Saint and Dr Ehud Hauben

### Study of bioactivity of Hengshan Astragalus Shiitake as biological response modifiers in cancer therapy

**Dr Linlin Ma**, Lecturer and Senior Researcher, Centre for Marine Bioproducts Development, College of Medicine and Public Health, Flinders University

**Dr Qi Liang**, Research Scientist, Centre for Marine Bioproducts Development, College of Medicine and Public Health, Flinders University

**Dr Ehud Hauben**, Senior Research Fellow and Group Leader at the Liver Metastasis Research Group, The University of Adelaide and BHI, TQEH

**Dr Kevin Fenix**, THRF Early Career Fellow, Liver Metastasis Research Group, The University of Adelaide and BHI, TQEH

**\$100,000 (\$25K Flinders University and \$75K from company), one year project**

A novel functional food for cancer prevention and treatment, Hengshan Astragalus Shiitake (HAS), was developed by cultivating shiitake mushroom with processed Astragalus membranaceus root, combining the anti-carcinogenic and immune-potentiating effects of two widely-used traditional medicines. Here, we will purify bioactive HAS components and test their direct pro-apoptotic/anti-carcinogenic effects on cancer cell-lines. We will also test their capacity to activate anti-tumour dendritic cells and cytokine-induced killer cells, in blood samples from healthy controls and from colorectal cancer (CRC) patients. The integrated therapeutic effects will be evaluated in a predictive mouse model of colorectal liver metastasis. Successful outcome: validation of new, safe and efficacious, non-invasive cancer therapy.

Read more: [Article on Flinders University website.](#)



## Grant from UniSA New Adventures Fund/THRF



### Identification of a diagnostic marker for assessment and management of psoriasis

**Dr Zlatko Kopecki**, Biomaterials Engineering and Nanomedicine, Future Industries Institute, University of South Australia

**Dr Branka Grubor-Bauk**, Virology Group, The University of Adelaide and BHI, TQEH



**Dr Danushka Wijesundara**, Virology Group, The University of Adelaide and BHI, TQEH

**Dr Kevin Fenix**, Liver Metastasis Research Group, The University of Adelaide and BHI, TQEH

**Professor Allison Cowin**, Biomaterials Engineering and Nanomedicine, Future Industries Institute, University of South Australia



Early and Mid-Career scientists, led by Dr Zlatko Kopecki and Dr Branka Grubor-Bauk, have been awarded funding from the University of South Australia's New Adventures Fund (\$18,619), together with leveraging funds from The Hospital Research Foundation (\$10,000). This UniSA scheme which funds projects for a maximum of three months will allow this group to provide proof-of-concept evidence of the identification of a new diagnostic marker for the assessment and management of psoriasis. This data will then be used to support larger grant applications in 2019 including NHMRC.

Psoriasis affects 1.6 million Australians. It is a chronic inflammatory skin disease in which T cells play a key role. No cure exists and current steroidal treatments are general immunosuppressants which can only be used for limited

time. Effective treatment dampens the inflammation, but psoriasis recurs in previously affected areas. These researchers will use animal models of acute and chronic psoriasis to identify a new diagnostic marker for the assessment and management of psoriasis. They will achieve this by incorporating their expertise in skin biology (Kopecki and Cowin) together with their expertise in immunology (Grubor-Bauk, Wijesundara and Fenix).

These interdisciplinary and cross institutional proof-of-principle studies will build on interdisciplinary fields of regenerative medicine, dermatology and immunology and have a real potential to identify a novel diagnostic marker of psoriasis for use in clinic and by pharmaceutical companies developing new therapies for treating inflammatory skin conditions.

## THRF Travel Award Report: Dr Branka Grubor-Bauk

**Dr Branka Grubor-Bauk**, Postdoctoral Researcher, Virology Group, The University of Adelaide and BHI, TQEH

Attended the 13th Annual Australian Centre for HIV and Hepatitis Virology Research (ACH2) Scientific Workshop

Yarra Valley, Victoria  
June 2018



This June I was lucky enough to receive a domestic Travel Award from The Hospital Research Foundation to attend the 13th Annual Australian Centre for HIV and Hepatitis Virology Research (ACH2) Scientific Workshop at the Yarra Valley in Victoria. The Virology group was well represented at this meeting, which is the most important national conference for hepatitis and HIV researchers in Australia. Dr Dan Wijesundara (THRF Early Career Fellow) and PhD students Mr Zelalem Mekonnen and Mr Makutiro Masavuli also attended and we were all selected to give oral presentations of various aspects of our research on HCV vaccines that were all well received. Dr Wijesundara and Mr Mekonnen were also awarded major and prestigious conference awards for their respective presentations.

ACH2 is a great networking event, as all the scientists are from Australia and collaborative opportunities are always explored and encouraged in a very relaxed environment. We have already set up new collaborations with researchers from the Burnet Institute in Melbourne and the University of New South Wales – so much so that the collaborative experiments are already underway at the Burnet.

The exciting part of the conference is that we all had the great pleasure of meeting Professor Jens Bukh, head of the Copenhagen Hepatitis C Program from Denmark who was the invited speaker. Prof Bukh is the pioneer of hepatitis C research and was the first researcher to publish the finding that the hepatitis C virus has six major genotypes. This has been extremely significant for clinical and basic

research. Prof Bukh also developed a system that, for the first time, enabled researchers to manipulate the hepatitis C virus in the laboratory. Subsequently, he developed unique new cell culture systems for the major genotypes. He was wonderful to meet, very knowledgeable and excited about our progress in the field of HCV vaccines.

I presented the findings from our most recent publication in the Journal of Virology (2018), where we demonstrated that using a cocktail of HCV DNA vaccines comprised of different HCV genotypes – was much more immunogenic across different HCV genotypes than when a global consensus sequence (spanning all genotypes) or a single genotype vaccine (at double the dose) are used. This study has great implications for future HCV vaccine design, as although we now have excellent but very expensive - direct acting antivirals that can cure HCV – re-infection is common and recovery from infection with one genotype, does not prevent infection with another genotype in the future.

An effective HCV vaccine must cover multiple HCV genotypes that circulate in the environment and we hope that with our findings we are a step closer to achieving this. This project was funded by the ACH2 last year and it was very important for us to show that we have achieved excellent results and published them in such a short period of time.

I greatly appreciated the funding support provided by THRF and their donors which enabled me to attend the ACH2.

## Vale Associate Professor Tim Mathew AM



Associate Professor Timothy Hamish Mathew AM died on 22 July 2018 at the age of 81. Tim was the Director of the Renal Unit at The Queen Elizabeth Hospital (TQEH) for 25 years (1977 to 2002) and Director of the Division of Medicine. Under his leadership, the Renal Unit developed a national and international reputation for clinical excellence, ground breaking clinical and basic research, and teaching of undergraduates and postgraduates. In the early 1980s, Tim developed the early organ donation protocols and systems for South Australia, a model that was then mirrored in other states and ultimately led to a national network. He helped develop the ANZDATA Registry, which under his leadership came to be recognised as the finest Registry of its type in the world.

In addition to the various committees and advisory roles Tim was involved in, he also Chaired the Human Research Ethics Committee (HREC) at TQEH/LMH/MH from 2006, before handing over the reins to Emeritus Professor Dick Ruffin in October 2014. Tim's final 'Human Research Ethics Report' can be found on page 136 of the [2014 BHI Research Report](#) which can be downloaded from the BHI website. In that report he praises the people he worked with as Chairman and writes "It has been a privilege for me to have been Chair of HREC for these past 8 years."

Tim was a founding member of Kidney Health Australia (formerly known as the Australian Kidney Foundation) and held many roles within the organisation. After he retired from TQEH Tim served as Medical Director of this foundation. In 2012 Tim received an AM (member in the general division of the Order of Australia) for services to medicine in the field of renal disease and transplantation through research and advocacy roles, and to Kidney Health Australia. Kidney Health Australia wrote on their post which shared the news of Tim's death that he was "a mentor to the entire nephrology community over 5 decades."

A donation in memory of Tim Mathew may be made directly to Kidney Health Australia [www.kidney.org.au/donate](http://www.kidney.org.au/donate)

## Summary of Inspection of BHI

Richard Bennett and myself had the opportunity of visiting the BHI on the 16th July 2018 without prior warning to the occupants. The purpose of the visit was to again assess the state of the facility and to attempt to observe any deficiencies in the way in which it was being utilised. I believe that on this occasion the laboratory space was substantially improved on previous visits, with much less rubbish being inappropriately managed, although there continue to be a number of pieces of equipment on benches that seem to have had little or no use since our previous visit twelve months ago.

There was, however, a much better feel about the general area and the move of the compactus to create extra storage space on Level 1 seems to have made a significant improvement. The specialist rooms have also been re-configured with a stool bank room and a co-location of a number of the groups and the swap of the confocal room and bacterial room with room for additional work cabinet spaces.

Overall I could find little significant concerns in the laboratories other than some expired chemicals which really should be disposed of.

In the office spaces, again the desks were either clearly being used or have been left vacant for new users. The fixed offices also seemed to be productively used and no significant concerns presented themselves.

I would like to take the opportunity to thank all the users of the BHI for their obvious pride in their building and appropriate use of the facilities. Unfortunately our inspection failed to unearth the lost electric bike which hopefully we can replace in the upcoming year.

**Report prepared by Professor Guy Maddern**

19th July 2018



## Farewell to THRF's Kate Rushforth

Many BHI researchers have been interviewed by Kate during her three years working as a Communications Officer with The Hospital Research Foundation. So, we thought it was only fitting to ask Kate a few questions before she left to take up her new position as Communications Officer of the Bedford Group.

### ***What has been your favourite research story?***

I'm not sure I can pick a favourite! I've loved writing every single research story. I always left after each interview amazed and inspired by how talented and driven every researcher is, and blown away by the exciting research happening right here in Adelaide! I've certainly learnt a lot over the last three years in this role! If I could pick one that has made me laugh the most, that would probably have to be writing about BiomeBank and the many stool jokes that followed.

### ***What was the most challenging research topic to write about?***

When I first started, I found it challenging to decipher some of the lab based research with all the technical words I had never heard of – I would often find myself Googling words back at the office! But I learnt as I went, and surprised myself with how quickly I picked up names and phrases. I'm leaving with a whole lot more knowledge that's for sure!

### ***What tips would you give researchers about being interviewed by THRF?***

My biggest tip would be just to be yourself and to relax! I prefer to call the interviews an informal chat about your work, they're not scary at all. Have fun and enjoy it!

### ***What was the best event that you attended while working for THRF?***

I would have to say being involved in The Longest Table over the last three years! It's always such a fun and exciting time of the year. I've had the opportunity to speak with so many hosts and hear their personal stories of how cancer has touched their lives. Also being paparazzi on the official night and surprising guests was always so much fun!

### ***What will you miss about your current job?***

I'll miss meeting with researchers, clinicians, patients and donors, hearing their inspiring stories and then sharing these with the THRF donor community. It's been a true privilege to be able to share these stories with the community. I'll also miss seeing everyone at the BHI!

### ***What does your new job entail?***

I'll be working as Communications Officer at the [Bedford Group](http://www.basilhetzelinstitute.com.au). Bedford changes the lives of people with disability by building their skills to participate in the wider community.

I'll be developing Bedford's quarterly magazine, 'Changing Lives', along with coordinating media opportunities, managing brand presence, producing communications campaigns, writing and uploading website content, managing Bedford's social media presence – and a lot more!



*L-R: THRF Ambassador Jenni Eyles, Kate Rushforth and Gwenda Graves, TQEH Research Secretariat, at a Home Lottery Launch in 2016*

Kate was a pleasure to work with and we wish her all the very best. *Rebecca, Kathryn and Gwenda*

# BHI STUDENT NEWS

BHI STUDENT REPS  
20180-2019



**Clementine Labrosciano (Level 2)**  
[clementine.labrosciano@adelaide.edu.au](mailto:clementine.labrosciano@adelaide.edu.au)



**Sarah Bernhardt (Level 1)**  
[sarah.bernhardt@adelaide.edu.au](mailto:sarah.bernhardt@adelaide.edu.au)



**Joe Wrin (Level 1)**  
[joe.wrin@adelaide.edu.au](mailto:joe.wrin@adelaide.edu.au)



the hospital  
research foundation

## Off the Clock Thurs 26 July

In keeping with the chilly weather we've been having lately, Off the Clock was moved indoors to Seminar Room 2. The response was gratifying, people were glad to have some pizza and chat without having the brisk weather to deal with. Thanks once again to The Hospital Research Foundation for sponsoring this regular get-together.

The next BHI Off the Clock is due to happen on Thursday 30 August. Hope you can make it along.

*Joe Wrin, PhD student, Breast Biology and Cancer Unit, BHI*



## Student Open Night: Mon 23 July

Professor John Horowitz, A/Prof Betty Sallustio, Dr Prue Cowled, Dr Kati Richter, Dr Rebecca Anderson and Gwenda Graves all participated in the [SA Academic Health Science and Translation Centre's](#) Student Open Night which was held at SAHMRI on Monday 23 July. At this event, undergraduate students in their final year or two come along to find out more about their postgraduate options at the all of the SA universities.



*Dr Kati Richter, and "her" banner which was created recently by the Faculty of Health and Medical Sciences at The University of Adelaide.*



# 2019 THRF SCHOLARSHIPS

The Institute (BHI) Policy Committee supports the following four Scholarship categories for 2019.

Enquiries to the Research Secretariat: [gwenda.graves@sa.gov.au](mailto:gwenda.graves@sa.gov.au)

## 1. 12 month THRF Postgraduate Research Scholarship

**Applications:** Open 23 July 2018; close 31 October 2018

**Scholarship Value:** RTP Stipend rate for 2019 (expected to be in vicinity of \$28,000)

**Number offered:** Variable, depending on funds available

**Eligibility:** Open to medical and science students enrolling in 2019 in a research higher degree at a South Australian University and supervised by researcher based at TQEH/BHI. A student can only hold The Hospital Research Foundation Postgraduate Research Scholarship if they do not simultaneously hold another fully funded Postgraduate Research Scholarship

**Condition:** 70% of work must be conducted at TQEH/BHI. Students reapplying for continuation of Scholarship funding must demonstrate that they have applied in 2019 for external scholarships for 2020. Continued funding is subject to satisfactory academic progress report and available funds.

**Selection:** When assessing a student's application for The Hospital Research Foundation Postgraduate Research Scholarship the Basil Hetzel Institute (BHI) Scholarship Selection Committee considers academic merit, postgraduate clinical training, where relevant, the quality of the proposed research, the suitability of the intended supervisor and Department, the capacity of the Department to support the student project, suitability of the applicant for research training, publications and highly relevant work experience.

## 2. NEW Postgraduate Top up Scholarships (Non-Medical degree background)

**Applications:** Open 23 July 2018; close 31 October 2018; Additional round may be considered

**Total Scholarship Value:** Up to \$10,000 per year for 3 years (PhD program) or 2 years (Masters)

**Number offered:** Variable, depending on funds available

**Eligibility:** Non-medical background graduates enrolling in a higher degree in 2019 at BHI who have been awarded a fully funded external scholarship. Subsequent proof of acceptance of external scholarship and enrolment start date required. Reports from referees who know the student's capacity for training are still required as part of the application submission process. Open to domestic students only.

**Condition:** 70% of work must be conducted at TQEH/BHI; continued funding is subject to satisfactory academic progress.

## 3. THRF Honours Research Scholarships

**Applications:** Open 23 July 2018; close 22 November 2018

**Total Scholarship Value:** \$8,000 for the year

**Number offered:** Variable, depending on funds available

**Eligibility:** Students must be eligible to enrol in an Honours Degree with any University in South Australia. A student can only hold The Hospital Research Foundation Honours Research Scholarship if they do not simultaneously hold another Honours Scholarship.

**Condition:** 70% of work must be conducted at TQEH/BHI.

## 4. THRF Vacation Research Scholarships

These Scholarships have been supported in the past by host departments. Vacation Scholarships will now be supported by half funding from THRF, and half funding from the host department.

**Applications:** Open 23 July 2018; close 11 October 2018

**Total Scholarship Value:** \$1,600 (\$200pw for maximum of 8 weeks)

**Number offered:** Up to 15 Scholarships, depending on funds available

**Eligibility:** The Vacation Research Scholarship is designed for undergraduate students who have completed at least two years of their course. A student can only hold The Hospital Research Foundation Vacation Research Scholarship if they do not simultaneously hold another Vacation scholarship.

**Condition:** The student will be based in a research group at TQEH/BHI.



the hospital  
research foundation

# COMMUNITY ENGAGEMENT



## Community Group Presentations

THRF are always looking for BHI researchers to present at community events. It is a wonderful opportunity for you to practice your public speaking skills, and present your work to a lay audience! If you are interested or would like some more information, please contact Tamara at THRF on 8244 1100 or [tpietraszuk@hospitalresearch.com.au](mailto:tpietraszuk@hospitalresearch.com.au)

## Scope TV: Sunday July 22nd

THRF Early Career Fellow **Dr Katharina Richter** from ENT Surgery featured on Channel 10's Scope TV on Sunday July 22. Scope TV is a science program aimed at school aged children. In this [video clip](#) Kati takes viewers through the lab and describes her research aimed at developing a new treatment to stop nasty superbugs in their tracks!



The [full episode of Scope](#) features Kati's segment between 17-21 minutes.

## Science Alive! 2018: before...



# GENERAL INFORMATION

## STATISTICIAN AT THE BHI

Dr Stuart Howell works at the BHI on Tuesdays. He is available and can be consulted by TQEH/ The University of Adelaide Faculty of Health & Medical Sciences staff and research higher degree students. Support is limited to 15 hours on a per project basis.



**Tuesdays**  
**BHI Level 1**  
**Room 1E.07**  
**Phone: 8222 6679**  
[stuart.howell@adelaide.edu.au](mailto:stuart.howell@adelaide.edu.au)

Dr Stuart Howell  
Senior Statistician  
Data, Design and Statistics  
Services  
Adelaide Health Technology  
Assessment (AHTA)  
School of Public Health  
The University of Adelaide

## TQEH Librarians

Regular weekly visits by TQEH librarians to the BHI occur on **Wednesdays** (BHI Room 1-E07). A librarian from the SA Health Library Service, The Queen Elizabeth Hospital Campus will be available to assist you with constructing suitable literature and database searches for your research and help you obtain relevant material. AutoAlerts can also be configured by library staff to automatically deliver the latest results from a saved database search directly to your preferred email account.

If you are unable to meet with the librarians at the BHI on Wednesday mornings please contact [anna.holasek@sa.gov.au](mailto:anna.holasek@sa.gov.au) or [rachel.davey@sa.gov.au](mailto:rachel.davey@sa.gov.au) to arrange a meeting with them at TQEH Library on level 5B of the main building.

Alternatively, visit their website at [www.salus.sa.gov.au](http://www.salus.sa.gov.au) to view their services and resources or use the quick online chat option to contact them. To access any of the electronic resources you will need to register online for a SALUS username and password.

## Roy Sneddon has moved to NALHN

**Roy Sneddon**, from the Office of Research Development and Research Education in the Faculty of Health and Medical Sciences at The University of Adelaide has been seconded to work with the Research Governance Office at the Northern Adelaide Area Health Service. So, unfortunately he will no longer be visiting the BHI on the first Thursday of each month! We thank Roy for offering his words of advice to postgraduate students based at the BHI.



Please contact the Faculty Health and Medical Sciences Research Office on [fhresed@adelaide.edu.au](mailto:fhresed@adelaide.edu.au) with any of your questions. They hope to visit us again soon.



**The Institute**

basil hetzel institute for translational health research

**TQEH Research Secretariat Contact Details**  
Ground Floor, (DX465101)  
Basil Hetzel Institute for Translational Health Research  
The Queen Elizabeth Hospital  
28 Woodville Rd, WOODVILLE SOUTH 5011  
Phone: 08 8222 7836 Fax: 08 8222 7872  
Email: [gwenda.graves@sa.gov.au](mailto:gwenda.graves@sa.gov.au)



# GENERAL INFORMATION CONTINUED

## Pre-review service for clinical research grants

All research studies, including grant funded research, require appropriate ethics and governance approvals before they can commence. Unlike the NHMRC, many funding bodies do not utilise a peer-review system as part of their grant funding rounds. This can lead to delays in researchers obtaining the post-award approvals that are required before they can start their projects.

The CALHN Research Office is offering pre-application scientific review of clinical human research projects by the CALHN HREC Chair, Mr Ian Tindall, with a view to facilitating efficient post-award approval processes. Please submit your study protocol/grant application and any information regarding investigational drugs or devices for review as soon as possible and no later than one week prior to the grant submission deadline.

For further information and submission please contact the CALHN Research Office on [Health.CALHNResearchEthics@sa.gov.au](mailto:Health.CALHNResearchEthics@sa.gov.au) or call 7117 2230

## CALHN Human Research Ethics Committee Submission and Meeting Dates for Applications 2018

| Final Submission Date | IDSC Meeting          | CALHN HREC Meeting    |
|-----------------------|-----------------------|-----------------------|
| Mon 22 January        | Thursday 1 February   | Thursday 8 February   |
| Monday 12 February    | Thursday 1 March      | Thursday 8 March      |
| Monday 12 March       | Thursday 5 April      | Thursday 12 April     |
| Monday 16 April       | Thursday 26 April     | Thursday 10 May       |
| Monday 14 May         | Thursday 24 May       | Thursday 7 June       |
| Monday 11 June        | Thursday 28 June      | Thursday 12 July      |
| Monday 16 July        | Thursday 26 July      | Thursday 9 August     |
| Monday 13 August      | Thursday 30 August    | Thursday 13 September |
| Monday 10 September   | Thursday 27 September | Thursday 11 October   |
| Monday 15 October     | Thursday 25 October   | Thursday 8 November   |
| Monday 12 November    | Thursday 29 November  | Thursday 13 December  |

Above are the meeting dates and final dates for submissions of applications for Scientific and Ethical approval. Any study which includes drug therapy is considered by the Investigational Drug Subcommittee (IDSC) the week prior to the CALHN HREC. Drug studies will be passed on to the CALHN HREC meeting. ALL HREC meetings will be held on Thursdays at Roma Mitchell House, Level 3, 136 North Terrace, Adelaide, and NOT at the BHI, TQEH.

For more information please contact:

|   |  |
|---|--|
| <b>Investigational Drugs Subcommittee (IDSC)</b><br>Mr Peter Siobodian or Dr Ada Lam<br>Executive Officer, Specialist Pharmacist<br>Phone: (08) 7074 1430 or (08) 7074 1150<br><a href="mailto:peter.siobodian@sa.gov.au">peter.siobodian@sa.gov.au</a><br><a href="mailto:ada.lam@sa.gov.au">ada.lam@sa.gov.au</a> | <b>CALHN Human Research Ethics Committee (HREC)</b><br>Ms Lisa Barrie<br>CALHN HREC<br>Level 3, Roma Mitchell House<br>Phone: (08) 7117 2229 or (08) 8222 6841<br><a href="mailto:Health.CALHNResearchEthics@sa.gov.au">Health.CALHNResearchEthics@sa.gov.au</a> |
|---|--|

## CALHN Animal Ethics Committee

As a result of the Centre for Cancer Biology relocating, these meetings will now occur as required. Further information: John Finnie, SA Pathology/CALHN AEC Committee [SAPathologyAEC@sa.gov.au](mailto:SAPathologyAEC@sa.gov.au)

## Grant and Award Opportunities

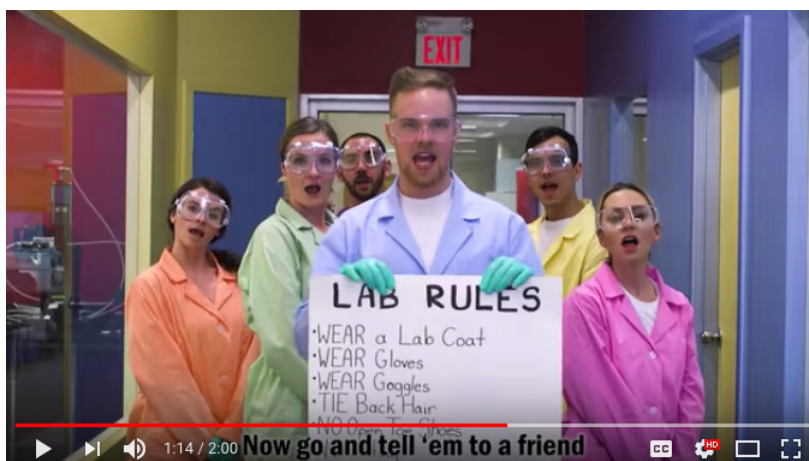
The [Ovarian Cancer Research Foundation \(OCRF\)](#) and the [National Breast Cancer Foundation of Australia \(NBCF\)](#) are pleased to announce their collaboration on a joint new biomedical research funding opportunity. For the first time, the NBCF and the OCRF have come together to jointly fund high impact translational research that spans both ovarian and breast cancers to improve outcomes for women.

The [Centenary Institute's Medical Innovation Awards](#) recognise bold young researchers who are taking the risks to ask the big questions of today - those questions that have most people saying "but that's impossible".

For all information visit the BHI Website's [Bulletin of Funding](#).

## WORK, HEALTH & SAFETY

### Basic Lab Rules



Check out this parody of Dua Lipa's "New Rules" from ASAPScience. Enjoy the short 2 minute clip!

<https://bit.ly/2JlatRF>

Like ASAPScience, the BHI also has some basic lab rules, some of which are listed below

1. Lab coat required
2. Closed shoes required
3. Safety goggles are required when performing hazardous procedures.
4. No eating and drinking in the lab areas

# UPCOMING EVENTS



**All kinds of  
awesome.**

**Science Alive! 2018**  
**Saturday 4 & Sunday 5th August**  
**Adelaide Showground**

Each August [Science Alive!](http://sciencealive.org.au) forms part of the celebrations for National Science Week. It aims to celebrate science and technology in a fun, interactive, dynamic and educational way. This will be the 5th year that the BHI has participated. The BHI booth will have the same set-up as last year: two “laparoscopic box-trainers”, generously provided by the Royal Australasian College of Surgeons, that people can test their surgical skills on and some spirometers that allow people to measure one aspect of their lung function.

**Come along and say hello!**

**Look for the green BHI balloons and the BHI banners at BOOTH 64  
in the south-eastern corner of the Goyder Pavilion (closest to Goodwood Road).**

Thanks to all the TQEH surgeons and BHI researchers who have  
volunteered to help out over the weekend.

**KIDS**

**FREE!**

Adults \$20 at door or cheaper online at  
<https://sciencealive2018.eventbrite.com.au>

**Sat 4th & Sun 5th Aug 2018**  
**9 am – 5 pm**

**Adelaide Showground**

*Science Alive! is proudly sponsored by*

**LOCKHEED MARTIN**

**NAVAL  
GROUP**



**SAAB**



**HITACHI**  
Inspire the Next

**NewSpec**



Meet exhibitors from

- defence & engineering • science & education
- nature & the environment • health & nutrition

For further information and **TICKETS** visit the  
**Science Alive! website ([sciencealivesa.org.au](http://sciencealivesa.org.au))**  
and for the latest news visit our Facebook page  
([ScienceAliveSA](https://www.facebook.com/ScienceAliveSA)).



**All kinds of  
awesome.**

This **FREE** hands-on science  
event has something for  
everyone. Families will  
enjoy the Explosive Science

Shows, the Curiosity Shows with Rob & Deane, native animals,  
robotics, dinosaur puzzles, bugs n slugs and DALEKS! There  
will also be 60 hands-on Questacon exhibits to explore and a  
special slime-making room. Teenagers will also find a range  
of info on fabulous science and engineering study and  
career options.





# THE QUEEN ELIZABETH HOSPITAL



The Institute

## AUGUST 2018

### BHI Research Seminars

with Invited External Speakers

[www.basilhetzelinstitute.com.au/events](http://www.basilhetzelinstitute.com.au/events)

**Seminars commence at 12pm, Basil Hetzel Institute, TQEH  
Ground Floor Seminar Rooms, 37a Woodville Road, Woodville South**

#### Wednesday 1 August

**SPEAKER:** Professor Ghil'ad Zuckermann, Chair of Linguistics and Endangered Languages, Department of Linguistics, School of Humanities, Faculty of Arts, The University of Adelaide  
**TITLE:** Language revival and wellbeing  
**CHAIR:** A/Prof Sarah Vreugde, Chief Medical Scientist, The University of Adelaide, Discipline of Surgery ENT, Level 1, BHI, TQEH. [sarah.vreugde@adelaide.edu.au](mailto:sarah.vreugde@adelaide.edu.au)

#### Wednesday 8 August

**SPEAKER:** Kate Christian, Cure Cancer Australia  
**TITLE:** Cure Cancer Australia grants: "Start-up" single investigator project funding for ECRs working in cancer research  
**CHAIRS:** Dr Bill Panagopoulos and A/Prof Wendy Ingman, The University of Adelaide, Discipline of Surgery, Level 1, BHI, TQEH. [wendy.ingman@adelaide.edu.au](mailto:wendy.ingman@adelaide.edu.au)

#### Wednesday 15 August

**SPEAKER:** Dr Ashleigh Smith, Senior Research Fellow, NHMRC-ARC Dementia Research Development Fellow, School of Health Sciences, University of South Australia  
**TITLE:** Daily activity patterns are associated with cortical connectivity in older adults  
**CHAIR:** Dr Joanne Dollard, Postdoctoral Research Fellow, Adelaide Medical School, The University of Adelaide, Ground Floor, BHI, TQEH. [joanne.dollard@adelaide.edu.au](mailto:joanne.dollard@adelaide.edu.au)

#### Wednesday 22 August

**SPEAKER:** Dr Nirmal Robinson, Senior Research Fellow and Lab Head, Inflammation and Ailments Laboratory, Centre for Cancer Biology, SA Pathology and University of South Australia  
**TITLE:** Metabolism at the cross roads of inflammation and immunity – Lessons from Salmonella  
**CHAIR:** Dr Ehud Hauben, Postdoctoral Researcher, The University of Adelaide, Discipline of Surgery, Level 1 BHI, TQEH. [ehud.hauben@adelaide.edu.au](mailto:ehud.hauben@adelaide.edu.au)

#### Wednesday 29 August

**SPEAKER:** Professor Andrea Yool, Professor of Physiology, University of Adelaide FHMS Sciences; Director of Research Education, FHMS; Director, Aquaporin Physiology and Drug Discovery Research Program  
**TITLE:** Drug design for aquaporin channels involved in cancer cell motility  
**CHAIR:** Dr Jenny Hardingham, Principal Medical Scientist, Haematology-Oncology Department Level 1 BHI, TQEH. [jennifer.hardingham@sa.gov.au](mailto:jennifer.hardingham@sa.gov.au)

#### **Please Note:**

All Honours and Postgraduate students are required to attend two thirds of BHI Research Seminar Program run between July and mid-October. Attending students are requested to sign the attendance sheet each session. University of Adelaide students attending this seminar gain 1hr CaRST (refer to UoA website).

# BHI 'Talking Heads'

## Research Seminars 2018

TQEH research staff and students are invited to the final BHI 'Talking Heads' research seminar for 2018. Prof Mike Roberts and Prof John Horowitz will speak on their pharmacological research activity and research plans, and invite your questions.

*Prof Mike Roberts*, Research Leader, Therapeutics Research Centre, University of South Australia and BHI, TQEH

*Title: 'Consumer safety and therapeutics: from the outside looking in'*

*Prof John Horowitz*, Head, TQEH Cardiology Unit

*Title: 'Coronary spasm: The Gordian Knot approach'*

**Chair:** Dr Yuliy Chirkov, Principal Medical Scientist

**Date:** **Tuesday 18 September 2018**

**Time:** 12.00 – 1.00pm, with lunch to follow

**Venue:** Ground Floor Seminar Rooms, Basil Hetzel Institute, 37a  
Woodville Road, Woodville South 5011

**Generously supported by The Hospital Research Foundation**

Enquiries: Gwenda Graves

Tel: 8222 6870

Email: [gwenda.graves@sa.gov.au](mailto:gwenda.graves@sa.gov.au)



**The Institute**

basil hetzel institute for translational health research



- THE QUEEN ELIZABETH HOSPITAL - ST MARGARET'S HOSPITAL -  
- THE PREGNANCY ADVISORY CENTRE - THE BASIL HETZEL INSTITUTE -

All staff and partners welcome. Formal dress.

**FRIDAY**

12<sup>th</sup> October, 2018

7pm for 7.30pm

Adelaide Entertainment Centre

**TICKETS**

\$120 Early Bird (until August 10<sup>th</sup>)

\$130 thereafter

[luisa.richards@sa.gov.au](mailto:luisa.richards@sa.gov.au)

for info and purchasing

Tickets include three course sit down meal, drinks package & entertainment.  
Silent auctions, raffles, door prizes and more.



the hospital  
research foundation  
finding cures improving care



The Institute





# The Institute

basil hetzel institute for translational health research

**CALL FOR ABSTRACTS**

## TQEH Research Expo

**Thursday 18 & Friday 19 October 2018**

**Ground Floor, Basil Hetzel Institute, 37a Woodville Road, Woodville**



**2017 Award Winners**

**Abstract deadline: 5pm Monday 20 August 2018**

To submit an Abstract:

- visit <http://www.basilhetzelinstitute.com.au> & read Abstract Guidelines
- visit <https://tinyurl.com/y98awhzi>
- complete and submit hard-copy of Abstract Certification form

**Enquiries to:** Lisa Leopardi

Chair, Research Day  
Organising Committee

(08) 8222 6759

[lisa.leopardi@sa.gov.au](mailto:lisa.leopardi@sa.gov.au)

[www.basilhetzelinstitute.com.au](http://www.basilhetzelinstitute.com.au)

[www.facebook.com/basilhetzelinstitute](https://www.facebook.com/basilhetzelinstitute)

### Major Sponsors



the hospital  
research foundation  
*finding cures improving care*



THE UNIVERSITY  
of ADELAIDE



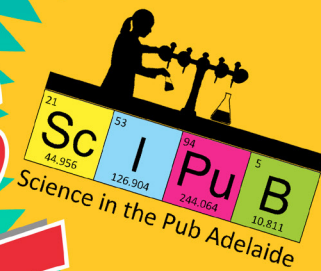
University of  
South Australia

**TQEH Research Expo incorporates TQEH Research Day**

HOSTED BY AND FEATURING  
FOR NATIONAL SCIENCE WEEK

SUPERSTARS  
OF STEM

# TALL TALES OF SCIENCE



WHAT DO SCIENTISTS REALLY DO  
ALL DAY (OR NIGHT!)? **CAN YOU  
PICK FACT FROM FICTION?** HERE  
IS YOUR CHANCE TO LISTEN TO  
SIX SCIENTISTS SHARE  
SOMETHING WEIRD OR  
WONDERFUL – BUT IT'S NOT ALL  
TRUE! CAN YOU PICK WHO IS  
TELLING TALL TALES??



An Australian Government Initiative



**BIG SCIENCE  
ADELAIDE**

BIG ISSUES, BRILLIANT MINDS, GREAT SIGHTS & TOP SCIENCE  
FEAST YOUR MIND ON NATIONAL SCIENCE WEEK IN THE HEART OF ADELAIDE | SAT 11 - SUN 19 AUGUST 2018



Join us at The Rob Roy Hotel, 106 Halifax St,  
Adelaide 6:30 pm, 16th August 2018

To register visit this EventBrite page: <https://bit.ly/2OwQN0r>





**Perform Your Science**  
Scott Theatre, The University of Adelaide  
7pm, 18 August 2018

The link is: <https://www.eventbrite.com/e/perform-your-science-tickets-47605326814>

Perform your Science is part of **National Science Week 2018** and is brought to you by Inspiring South Australia.

Scientists are taking a brave step into the spotlight of the stage for **Perform Your Science**, a show that will see scientists tell their research stories through the arts. Behold wondrous stories of science as told through magic, interpretive dance, poetry and more.

Perform your Science will feature researchers and PhD students who have collaborated with artists to develop their extraordinary performances. Expect the story of wasps unfold through magic and explore the world of neuroscience through dance.

The performances will be judged by a panel of esteemed artists and science communicators. The audience will also get their say and can vote for the People's Choice Award. The best performances of the night will take home a prize.

Drinks and refreshments will be available for purchase before the performance and during the interval.

## **CRE Frailty and Healthy Ageing are competing!**

Members of the CRE Frailty and Healthy Ageing – Knowledge Translation group have an entry at this Perform Your Science event!

CRE postdoctoral fellow Dr Mandy Archibald (from Flinders University) is working with a team that will be competing.



# PUBLICATIONS

If you wish to have a recent publication included, please send details to the BHI Communications Officer  
[rebecca.anderson@adelaide.edu.au](mailto:rebecca.anderson@adelaide.edu.au)

De Menezes Caceres V, Stocks N, Adams R, Haag D, Peres K, Peres M, Gonzalez-Chica D. Physical activity moderates the deleterious relationship between cardiovascular disease, or its risk factors, and quality of life: Findings from two population-based cohort studies in Southern Brazil and South Australia. *PLoS ONE*. 13(6) 2018. Article Number: e0198769. 2018 June DOI:10.1371/journal.pone.0198769.

Hall S, Nash P, Rischmueller M, Bossingham D, Bird P, Cook N, Witcombe D, Soma K, Kwok K, Thirunavukkarasu K. Tofacitinib, an oral Janus kinase inhibitor: Pooled efficacy and safety analyses in an Australian rheumatoid arthritis population. *Rheumatology & Therapy*. 2018 June.

Jadczak A, Dollard J, Mahajan N, Visvanathan R. The perspectives of pre-frail and frail older people on being advised about exercise: a qualitative study. *Family Practice*. 35(3):330-335, 2018 May.

Karatassas A, Anthony A, Reid J, Leopardi L, Hewett P, Ibrahim N, Maddern G. Developing a mesh-tissue integration index and mesh registry database: the next step in the evolution of hernia repair. *ANZ Journal of Surgery*. 88(6):528-529, 2018 June.

Leach D, Buchanan G. Protocols for studies on stromal cells in prostate cancer. *Methods in Molecular Biology*. 1786:207-218, 2018.

Murphy J, Ramezanpour M, Roscioli E, Psaltis A, Wormald P-J, Vreugde S. Mucosal zinc deficiency in chronic rhinosinusitis with nasal polyposis contributes to barrier disruption and decreases ZO-1. *Allergy*. 2018 June doi: 10.1111/all.13532.

Pham H, Stevens J, Rigda R, Phillips L, Wu T, Hausken T, Soenen S, Visvanathan R, Rayner C, Horowitz M, Jones K. Effects of intraduodenal administration of the artificial sweetener sucralose on blood pressure and superior mesenteric artery blood flow in healthy older subjects. *American Journal of Clinical Nutrition*. 108:1-7, 2018 June doi/10.1093/ajcn/nqy060/5033926.

Safdar B, Spatz E, Dreyer R, Beltrame J, Lichtman J, Spertus J, Reynolds H, Geda M, Bueno H, Dziura J, Krumholz H, D'Onofrio G. Presentation, clinical profile, and prognosis of young patients with myocardial infarction with nonobstructive coronary arteries (MINOCA): Results from the VIRGO Study. *Journal of the American Heart Association*. 7(13), e009174, 2018 June DOI: 10.1161/JAHA.118.009174.

Shields M, Andrew N, LaHood B, Saha N. Eye injuries following ocular exposure to euphorbia plant sap: an Australian and New

Zealand case series. *Clinical & Experimental Ophthalmology*. 46(4):434-437, 2018 May.

Wong G, Kumar R, Beeke C, Ullah S, Chen J, Karapetis C, Price T, Padbury R. Response to: "Consideration of KRAS mutation status may enhance the prognostic impact of indeterminate extrahepatic disease in the lungs, as identified by 18FDG-PET, in patients with colorectal liver metastases". *Annals of Surgery*. 268(1):e9-e10, 2018 Jul.

Abd E, Benson H, Roberts M, Grice J. Follicular penetration of caffeine from topically applied nanoemulsion formulations containing penetration enhancers: *In vitro* human skin studies. *Skin Pharmacology & Physiology*. 31(5):252-260, 2018 Jul.

Chan F, Kennedy B, Nelson R. Fatal Strongyloides hyperinfection syndrome in an immunocompetent adult with review of the literature. *Internal Medicine Journal*. 48(7):872-875, 2018 Jul.

Gyawali P, Martin S, Heilbronn L, Vincent A, Jenkins A, Januszewski A, Taylor A, Adams R, O'Loughlin P, Wittert G. Cross-sectional and longitudinal determinants of serum sex hormone binding globulin (SHBG) in a cohort of community-dwelling men. *PLoS ONE*. 13(7):e0200078, 2018 doi.org/10.1371/journal.pone.0200078.

Lamin V, Jaghoori A, Jakobczak R, Stafford I, Heresztyn T, Worthington M, Edwards J, Viana F, Stuklis R, Wilson D, Beltrame J. Mechanisms responsible for serotonin vascular reactivity sex differences in the internal mammary artery. *Journal of the American Heart Association*. 7(14), 2018 Jul doi.org/10.1161/JAHA.117.007126.

Md Dom Z, Collier J, Carroll R, Tuke J, McWhinney B, Somogyi A, Sallustio B. Mycophenolic acid concentrations in peripheral blood mononuclear cells are associated with the incidence of rejection in renal transplant recipients. *British Journal of Clinical Pharmacology*. (Accepted Article) 2018 Jul doi: 10.1111/bcp.13704.

Ong P, Camici PG, Beltrame J, Crea F, Shimokawa H, Sechtem U, Kaski J, Noel Bairey Merz C, Coronary Vasomotion Disorders International Study Group (COVADIS). Response to letter from Piciche: The microvascular network connecting extracardiac arteries to the heart. *International Journal of Cardiology*. 259:56, 2018 doi.org/10.1016/j.ijcard.2018.01.052.

Pisaniello H, Lester S, Gonzalez-Chica D, Stocks N, Longo M, Sharplin G, Dal Grande E, Gill T, Whittle S, Hill C. Gout prevalence and predictors of urate-lowering therapy use: results from a population-based study. *Arthritis Research & Therapy*. 20(1):143, 2018 Jul.

# PUBLICATIONS CONTINUED

If you wish to have a recent publication included, please send details to the BHI Communications Officer  
[rebecca.anderson@adelaide.edu.au](mailto:rebecca.anderson@adelaide.edu.au)

Theou O, Sluggett J, Bell J, Lalic S, Cooper T, Robson L, Morley J, Rockwood K, Visvanathan R. Frailty, hospitalization, and mortality in residential aged care. *Journals of Gerontology Series A-Biological Sciences & Medical Sciences*. 73(8):1090-1096, 2018 Jul.

Tie J, Cohen J, Wang Y, Li L, Christie M, Simons K, Elsaleh H, Kosmider S, Wong R, Yip D, Lee M, Tran B, Rangiah D, Burge M, Goldstein D, Singh M, Skinner I, Faragher I, Croxford M, Bampton C, Haydon A, Jones I, S Karapetis C, Price T, Schaefer M, Ptak J, Dobbyn L, Silliman N, Kinde I, Tomasetti C, Papadopoulos N, Kinzler K, Volgestein B, Gibbs P. Serial circulating tumour DNA analysis during multimodality treatment of locally advanced rectal cancer: A prospective biomarker study. *Gut*. (no pagination), 2018 doi:10.1136/gutjnl-2017-315852.

Warren S, Nobis M, Magenau A, Mohammed Y, Herrmann D, Moran I, Vennin C, Conway J, Melenec P, Cox T, Wang Y, Morton J, Welch H, Strathdee D, Anderson K, Phan T, Roberts M, Timpson P. Removing physiological motion from intravital and clinical functional imaging data. *eLife*. 7:e35800 2018 Jul doi:10.7554/eLife.35800.001.

Aitken D, Laslett L, Cai G, Hill C, March L, Wluka A, Wang Y, Blizzard L, Cicuttini F, Jones G. A protocol for a multicentre, randomised, double-blind, placebo-controlled trial to compare the effect of annual infusions of zoledronic acid to placebo on knee structural change and knee pain over 24 months in knee osteoarthritis patients - ZAP2. *BMC Musculoskeletal Disorders*. 19(1):217, 2018 Jul.

Garcia M, de Vasconcellos F, Raffier C, Roberts M, Grice J, Elizabeth Benson H, Leite-Silva V. Alternative methods to animal studies for the evaluation of topical/transdermal drug delivery systems. *Current Topics in Medicinal Chemistry*. 18(4):287-299, 2018.

Horowitz JD, Sage P. Can we improve long-term outcomes postbifurcation stenting by prolonged dual antiplatelet therapy? *Circulation: Cardiovascular Interventions*. 11(7):e006922, 2018 Jul.

Nanjappa N, Jesudason D, Thiruvengkatarajan V, Meyer E. Perioperative management of sodium-glucose cotransporter-2 inhibitors: importance of a nuanced approach. *Anaesthesia & Intensive Care*. 46(4):424-425, 2018 Jul.

Peeters M, Price T, Taieb J, Geissler M, Rivera F, Canon JL, Pentheroudakis G, Koukakis R, Burdon P, Siena S. Relationships between tumour response and primary tumour location, and predictors of long-term survival, in patients with RAS wild-type

metastatic colorectal cancer receiving first-line panitumumab therapy: retrospective analyses of the PRIME and PEAK clinical trials. *British Journal of Cancer*. Pp.1-10, 2018 Jul doi.org/10.1038/s41416-018-0165-z.

Shapiro J, Thavaneswaran S, Underhill C, Robledo K, Karapetis C, Day F, Nott L, Jefford M, Chantrill L, Pavlakis N, Tebbutt N, Price T, Khasraw M, Van Hazel G, Waring P, Tejpar S, Simes J, GebSKI V, Desai J, Segelov E. Cetuximab alone or with Irinotecan for resistant KRAS-, NRAS-, BRAF- and PIK3CA-wild-type metastatic colorectal cancer: The AGITG Randomized Phase II ICECREAM Study. *Clinical Colorectal Cancer*. [Article in Press], 2018 doi.org/10.1016/j.clcc.2018.06.002.

Sheikh A, Zeitz C, Rajendran S, Di Fiore D, Tavella R, Beltrame J. Clinical and coronary haemodynamic determinants of recurrent chest pain in patients without obstructive coronary artery disease - A pilot study. *International Journal of Cardiology*. 267:16-21, 2018 Sep doi.org/10.1016/j.ijcard.2018.04.077.

Smith E, Palethorpe H, Tomita Y, Pei J, Townsend A, Price T, Young J, Yool A, Hardingham J. The purified extract from the medicinal plant *Bacopa monnieri*, Bacopaside II, inhibits growth of colon cancer cells *in vitro* by inducing cell cycle arrest and apoptosis. *Cells*. 7(7), 2018 Jul doi:10.3390/cells7070081.

Usmani Z, Carson-Chahhoud K, Esterman A, Smith B. A randomized placebo-controlled trial of paroxetine for the management of anxiety in chronic obstructive pulmonary disease (PAC Study). *Journal of Multidisciplinary Healthcare*. 11:287-293, 2018.

Vincent F, Lang T, Kandane-Rathnayake R, Downie-Doyle S, Morand E, Rischmueller M. Serum and urinary macrophage migration inhibitory factor (mif) in primary Sjogren's Syndrome. *Joint, Bone, Spine: Revue du Rhumatisme*. [Accepted Manuscript] 2018 Jul doi.org/10.1016/j.jbspin.2018.07.001.

Walsh T, Arnold J, Evans A, Yaxley A, Damarell R, Shanahan E. The association between body fat and musculoskeletal pain: a systematic review and meta-analysis. *BMC Musculoskeletal Disorders*. 19(1):233, 2018 doi.org/10.1186/s12891-018-2137-0.

Zalewski P, Beltrame J, Wawer A, Abdo A, Murgia C. Roles for endothelial zinc homeostasis in vascular physiology and coronary artery disease. *Critical Reviews in Food Science & Nutrition*. (Accepted Manuscript), 2018 doi: 10.1080/10408398.2018.1495614.

Amarah A, Petlin D, Grice J, Hadgraft J, Roberts M, Anissimov Y. Compartmental modeling of skin transport. *European Journal of Pharmaceutics & Biopharmaceutics*. 130:336-344, 2018 Jul.

# PUBLICATIONS CONTINUED

If you wish to have a recent publication included, please send details to the BHI Communications Officer  
[rebecca.anderson@adelaide.edu.au](mailto:rebecca.anderson@adelaide.edu.au)

Ang J, Doyle B, Allen P, Cheek C. Teaching bedside ultrasound to medical students. *The Clinical Teacher*. 15(4):331-335, 2018 Aug.

Gostlow H, Vega C, Marlow N, Babidge W, Maddern G. Do surgeons react?: A retrospective analysis of surgeons' response to harassment of a colleague during simulated operating theatre scenarios. *Annals of Surgery*. 268(2):277-281, 2018 Aug.

Gyawali P, Martin S, Heilbronn L, Vincent A, Taylor A, Adams R, O'Loughlin P, Wittert G. The role of sex hormone-binding globulin (SHBG), testosterone, and other sex steroids, on the development of type 2 diabetes in a cohort of community-dwelling middle-aged to elderly men. *Acta Diabetologica*. 55(8):861-872, 2018 Aug.

Melaku Y, Gill T, Taylor A, Adams R, Shi Z. A comparison of principal component analysis, partial least-squares and reduced-rank regressions in the identification of dietary patterns associated with bone mass in ageing Australians. *European Journal of Nutrition*. 57(5):1969-1983, 2018 Aug.

Prasanna T, Karapetis C, Roder D, Tie J, Padbury R, Price T, Wong R, Shapiro J, Nott L, Lee M, Chua Y, Craft P, Piantadosi C, Sorich M, Gibbs P, Yip D. The survival outcome of patients with metastatic colorectal cancer based on the site of metastases and the impact of molecular markers and site of primary cancer on metastatic pattern. *Acta Oncologica*. 1-7, 2018 doi.org/10.1080/0284186X.2018.1487581.

Price T, Tang M, Gibbs P, Haller D, Peeters M, Arnold D, Segelov E, Roy A, Tebbutt N, Pavlakis N, Karapetis C, Burge M, Shapiro J. Targeted therapy for metastatic colorectal cancer. *Expert Review of Anticancer Therapy*. [Accepted Manuscript] 2018 doi: 10.1080/14737140.2018.1502664.

Ramezanpour M, Bolt H, Psaltis A, Wormald P-J, Vreugde S. Primary human nasal epithelial cells: a source of poly (I:C) LMW-induced IL-6 production. *Scientific Reports*. 8(1):11325, 2018 Jul doi:10.1038/s41598-018-29765-0.

Thiruvankatarajan V, Cruz Eng H, Adhikary S. An update on regional analgesia for rib fractures. *Curr Opin Anaesthesiol*. 31, 2018 Jul doi:10.1097/ACO.0000000000000637.

Walsh T, Gill T, Evans A, Yaxley A, Chisholm J, Kow L, Arnold J, Shanahan E. Changes in foot pain, structure and function following bariatric surgery. *Journal of Foot & Ankle Research*. 11:35, 2018 doi.org/10.1186/s13047-018-0277-y.



## THRF Postgraduate Scholarships

Congratulations to the following four Postgraduate Students who have received funding through The Hospital Research Foundation's latest grant round at the BHI, TQEH. They will all commence their PhDs in the coming months, with each also having accepted a fee-waiver scholarship from The University of Adelaide.

"We are thrilled to be funding world-class research to promising students who have the chance to begin their research careers with our help. We congratulate the students and look forward to watching them excel and deliver life-changing outcomes for the South Australian community," said THRF Chief Executive Paul Flynn.

### **MR ALEMAYEHU DUGA**

**Supervisors:** Associate Professor Betty Sallustio and Professor John Horowitz

**BHI Research Groups:** Clinical Pharmacology Research Group and Cardiovascular Pathophysiology and Therapeutics Group

**TQEH Departments:** Clinical Pharmacology and Cardiology

**Thesis Title:** Utilisation of perhexiline as an adjuvant to anti-cancer therapy

### **DR LINH NGO**

**Supervisors:** Professor Robert Adams, Dr Isuru Ranasinghe, A/Prof A Ganesan (Flinders University)

**BHI Research Groups:** The Health Observatory, Health Performance and Policy Research Unit

**TQEH Department:** Medicine

**Thesis Title:** Outcomes of Catheter Ablation for treatment of atrial fibrillation in Australia: a population-wide study

### **MRS GOHAR SHAGHAYEGH**

**Supervisors:** Professor Guy Maddern, Dr Ehud Hauben, Professor Nico Voelker (Flinders University)

**BHI Research Groups:** Surgical Science Research Group, Liver Metastasis Research Group

**TQEH Departments:** Surgery

**Thesis Title:** Development of targeted nanoparticles as preventative therapy for liver metastasis

### **DR RAJAN SUNDARESAN VEDIAPPAN**

**Supervisors:** Professor PJ Wormald, A/Prof Alkis Psaltis, A/Prof Sarah Vreugde

**BHI Research Group:** ENT Surgery

**TQEH Department:** Otorhinolaryngology, Head and Neck Surgery

**Thesis Title:** Chitosandextran (Chitodex) gel with and without deferiprone and Gallium Protoporphyrin: wound healing and postoperative outcomes in Chronic rhinosinusitis

## Your Support Will Fork Cancer!

A big thank you to those who supported and purchased lunch as part of THRF's annual cancer fundraiser The Longest Table.

Our two Ambassadors Tim and Kyle from My Kitchen Rules served lunch from their popular food truck CAROclub at the BHI on Tuesday 26 June and part proceeds going towards cancer research at the BHI and TQEH.

Our Longest Table fundraiser has wrapped up for another year and once again THRF thanks your incredible efforts of hosting a Longest Table for a sixth year in a row! So far this year, TLT has raised an incredible \$175,000 – and this isn't the final total!

Thank you for helping us raise vital funds so we can continue supporting cancer research at the BHI and fork cancer!

*Thank you for hosting another successful BHI Longest Table lunch at which you raised over \$1,600!*



## New Faces Joined THRF



*L-R: Sophia and Kate are passionate about contributing to the health and wellbeing of the SA community.*

Joining THRF with a wealth of knowledge is our Marketing Specialist Sophia Saracino and Marketing and Logistics Coordinator, Kate Bacon! You may have already met or seen Sophia at Tim and Kyle's Food Truck Day. Her role includes writing direct mail appeals, electronic communications and integrated marketing campaigns for the THRF Group. She is inspired daily by the research being undertaken by people like yourselves. You may see her around the BHI or even receive an email from her wanting to share your story!

Bringing previous knowledge from her printing background, Kate's role includes coordinating operational logistics for the THRF Group including marketing, communication and event activities. Kate is enjoying working with SA supplies who go above and beyond to support the work of THRF, as well as working alongside a passionate team, contributing to improve the lives of all South Australians.