



The Institute

basil hetzel institute for translational health research

MONTHLY BULLETIN FOR TQEH RESEARCH COMMUNITY

WINNING NEWS

www.basilhetzelinstitute.com.au

Follow us 

Funding received to develop a needle-free Zika virus vaccine

Dr Branka Grubor-Bauk and her Viral Immunology Group at the Basil Hetzel Institute, TQEH, have been awarded \$675,000 from the Federal Government's highly competitive Biomedical Translation Bridge (BTB) program to develop a novel needle-free vaccine to prevent infection of pregnant women with Zika virus. Dr Grubor-Bauk said there was currently no therapy or approved vaccine for Zika – a mosquito-transmitted 'flavivirus' which causes microcephaly (a birth defect where a baby's head is significantly smaller than expected) and other severe birth defects in infants born to infected mothers.



Dr Branka Grubor-Bauk

"Zika virus is extremely dangerous if you're pregnant, severe birth defects such as microcephaly cannot be corrected, and the accompanying disabilities are lifelong and catastrophic," said Dr Grubor-Bauk. "This research aims to develop a novel needle-free vaccine to prevent infection of pregnant women and the resulting devastating congenital effects in the unborn child."

The Biomedical Translation Bridge program, delivered by MTPConnect, is an initiative of the Medical Research Future Fund and aims to facilitate the translation of new therapies, technologies and medical devices through to the proof-of-concept stage and ultimately commercialisation. An additional \$675,000 in matched funding will be provided by industry partners Enesi Pharma, The Hospital Research Foundation, Adelaide Enterprise Commercial Accelerator Scheme and the University of Adelaide's Faculty of Health and Medical Sciences.

In collaboration with colleagues from the University of Wisconsin-Madison, Harvard University and Duke-National University of Singapore, Dr Grubor-Bauk will use this funding to progress the necessary pre-clinical work to enable Phase 1 clinical trials in patients.

The technology, developed in collaboration with industry partner Enesi Pharma, Oxford, UK, combines a protective Zika virus DNA vaccine with Enesi Pharma's Implavax® Technology. If you are curious about how needle-free vaccination works watch this [video!](#)

Media release: [University of Adelaide](#), [The Hospital Research Foundation](#)

OCTOBER 2020 ISSUE 138

IN THIS ISSUE

- p 3 News
- p 8 Student News
- p 9 General Information
- p 11 Work, Health & Safety
- p 12 Upcoming Events
- p 18 Publications
- p 19 THRF News

BHI SEMINARS

BHI Student & Staff Seminars
1-2pm Tuesdays

All seminars take place in the BHI
Ground Floor Seminar Rooms

UPCOMING EVENTS

MRFF Info Session
2pm Fri 2 October

TQEH Research Expo
Thurs 15 & Fri 16 October

BHI Mindfulness Sessions
from 12pm Monday
19th October

BHI Off the Clock
4pm last Wednesday of each month
currently postponed

BHI HUB

Scientific Director Joy Rathjen

BHI First Floor
Phone: 8222 6524
joy.rathjen@sa.gov.au
Work days: Monday - Wednesday



In early September I drove past the Wayville showgrounds and noted, with a pang of sadness, that my normal birthday trip to the show would not be happening. So many events in our lives have been impacted by the COVID-19 pandemic, including events at the BHI. It is, therefore, important to report the progress we have made towards returning to normal activities safely and successfully.

We have been running our weekly seminar series as a face-to-face event, supplemented by Zoom, on Tuesday lunchtimes for a couple of months. There have been changes and learnings, but we are maintaining physical distancing while accommodating good attendance numbers. Our seminar room is often safely full at 42 people and we are averaging another 15 attendees via Zoom.

Last week we held a 'Longest Table' morning tea to raise money for The Hospital Research Foundation. Some of us donned gloves and handled the tongs to ensure that all food was served safely onto plates. The event has raised \$1671.00 to date, an excellent outcome from our community.

The TQEH Research Expo organising committee made a decision in April to plan for a face-to-face event on October 15th and 16th, delaying any move to a Zoom only meeting due to COVID-19 until the last moment. We are really pleased we made this decision. COVID-19 has necessitated changes to our program and venue, and as numbers will be more restricted some attendees may need to log in rather than walk in, but the event will be face-to-face. I think I can speak for many researchers at the BHI, TQEH when I suggest that we are really looking forward to coming together as a community to support our research students and listen to some science [see pages 12 & 13 for more details about [TQEH Research Expo](#)].

BHI Facility Manager Kathryn Hudson

BHI Ground Floor
Phone: 8222 7427
kathryn.hudson@sa.gov.au



BHI Communications Officer Rebecca Anderson

BHI Ground Floor
Phone: 8222 7345
rebecca.anderson@adelaide.edu.au
Work days: 9-3pm Tuesday - Thursday

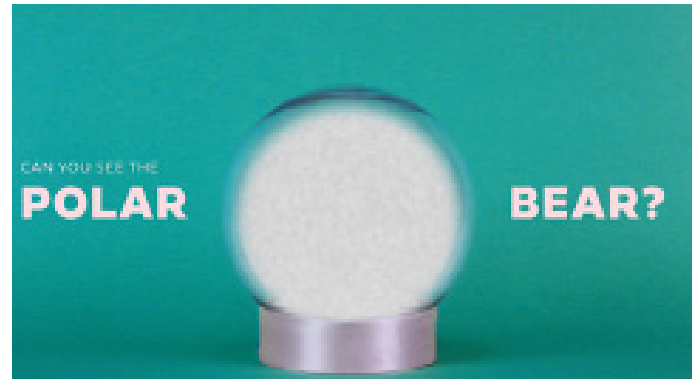


NEWS

Animations created through collaboration between BHI researchers and UniSA Design students

After a successful pilot program last year, 10 UniSA Bachelor of Design students studying Visual Communication were partnered with BHI researchers to develop short animations as part of their coursework. This real-world experience has students working for clients who brief the students on their topic and target audience.

At the start of first semester researchers presented talks that outlined the work they wanted to feature in the animation and discussed what they were looking for with their students. All participants agreed that it was fortunate that this happened early in the semester as restrictions due to COVID-19 meant that all future discussions about their work took place via zoom meetings or phone calls. Happily, everyone was able to come together at the BHI on Wednesday 8 July for the students to showcase their final animations – it was the first time the students and their lecturer, Martina Budimir, had been together since March!



click on the image above to watch the animation

Groups of 2-3 UniSA students created animations for three different BHI research groups. Three animations were intended for use in research presentations, to show potential investors, or to share with people directly affected by a condition, while one animation was intended for the general public through websites and social media platforms.

Breast Biology and Cancer Unit - Can you see the polar bear?

Associate Professor Wendy Ingman, research leader of the Breast Biology and Cancer Unit, and InforMD leader and spokesperson [<https://www.informd.org.au/>], provided a design brief to Breeze Millard and Emma Bailey to create a short educational animation about breast density. Breeze and Emma took the brief and created the polar bear hidden in a snow globe as an analogy for cancers hidden in dense breast tissue. The project took shape over several months, with fantastic input from the Australian Breast Density Consumer Advisory Council as well as leading clinical radiologists, who helped the team get the wording and visuals just right. Hayley Pearson from Adelady kindly put her amazing voice to work and recorded the voice over in her home studio. The video animation was launched on September 30 in the lead up to October's Breast Cancer Awareness month.

ENT Surgery

Associate Professor Sarah Vreugde, from ENT Surgery, worked with Max Ballard and Josephine Wellman to come up with an animation that showed the benefits of using Deferiprone-Chitogel to prevent adhesions forming after abdominal surgery. Sarah said "The students did a fabulous job in animating this. I was really impressed. The video was very clear, showing the main mechanism of action of how this surgical hydrogel does such a good job at preventing adhesions. I will definitely use it in my presentations!"

Another ENT Surgery animation, intended for a scientific audience was developed by PhD student Gohar Shaghayegh and design students Georgia Schroeter, Jayde Vandborg and Stephanie Oxenham. This animation was perhaps more challenging due to the highly technical scientific content about different inflammatory pathways in chronic rhinosinusitis patients. Gohar commented that "Although immunology concepts are always complex and hard to understand, the students did a great job and showed the differences between two complex inflammatory pathways perfectly. I really appreciate their work and will definitely be using their video in my presentations."

continued on page 4

Animations created through collaboration between BHI and UniSA Design students (continued)



UniSA Creative: Standing L-R: Lecturer Martina Budimir with students Josephine, Max, Sonia, Chris, Brian and Breeze; Kneeling L-R: Stephanie, Jayde, Georgia and Emma

Inflammatory Bowel Disease Research Group

The animation project for the Inflammatory Bowel Disease Research Group, which was led by senior research dietician and PhD student Alice Day, included three design students: Chris Filosi, Brian Bolado and Sonia Zanatta. The students were asked to create an animation for a pilot study that is investigating the role of diet as an adjunctive therapy in patients with mild-moderate ulcerative colitis. The project proposal included describing the hypothesis and the proposed mechanisms of the dietary strategy being used in the Exploring diet as Adjunctive Therapy in Ulcerative Colitis (EAT-UC) study. Alice said “Chris, Brian and Sonia rose to the challenge of translating a clinically-focused proposal into a 3-minute animation with accompanying voice over. The students did a sensational job of grasping complex medical concepts and lay person (aka dietitian) design concepts to produce a highly quality, well designed animation that very clearly depicts the proposed mechanistic action of the dietary intervention.” This animation will be used for presentations, as a teaching aid, and still images will be used for educational purposes. Alice finished by saying that “Chris, Brian and Sonia should be very proud of the project they delivered. Well done from our IBD research team here at the BHI, TQEH!”

Thanks to UniSA lecturers

Thanks are extended to UniSA Creative academics Martina Budimir (Lecturer, Communication Design) and Luci Giannattilio (Program Director, Bachelor of Design (Communication Design)) as well as to the students enrolled in AAD Transdisciplinary Projects as part of their Bachelor of Design (Visual Communication).

Animation projects for 2021 students

UniSA will be offering the subject again next year. Please contact Kathryn Hudson kathryn.hudson@sa.gov.au if you are a BHI researcher and have a concept you would like to see animated.

Professor John Beltrame is Australia's most cited cardiology researcher

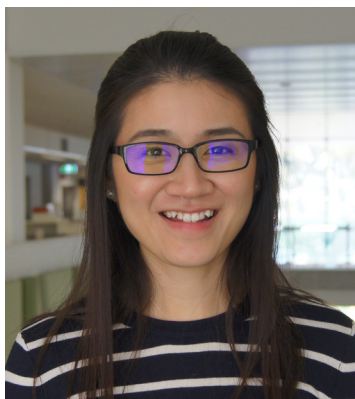
Congratulations to [Professor John Beltrame](#), research leader of the Translational Vascular Function Research Collaborative at the Basil Hetzel Institute, TQEH, for being named as the Australian cardiology researcher with the highest number of citations from papers published in the last 5 years in the top 20 journals in the field! [The Australian's Special Report](#) covered 255 research fields, with 66 research field leaders being named in the area of Health and Medical Sciences. While The University of Adelaide was the "lead institution" in a few fields, John was the only South Australian "field leader".

More information about how the talent discovery and research analytics firm League of Scholars helped The Australian analyse publicly accessible data can be found [here](#).

Health & Medical Sciences Australia's research field leaders

These 66 scholars are Australia's leading researchers in health and medical sciences – one selected from each of the 66 fields in this discipline. They are the researchers with the highest number of citations from papers published in the last five years in the 20 top journals in their field. In each field we also name Australia's top research institution, the one with most citations in the top 20 journals in the field in the last five years.

Field Addiction Field leader Louisa Degenhardt, UNSW Lead institution UNSW	Field Diabetes Field leader Sophia Zoungas, Monash Lead institution Monash
Field AIDS & HIV Field leader Matthew Law, UNSW Lead institution UNSW	Field Emergency Medicine Field leader Zsolt Balogh, Uni of Newcastle Lead institution Monash
Field Alternative & Traditional Medicine Field leader Jon Adams, UTS Lead institution Western	Field Endocrinology Field leader Peter Ebeling, Monash Lead institution Monash
Field Anaesthesiology Field leader Paul Myles, Monash Lead institution Monash	Field Epidemiology Field leader Mary-Louise McLaws, UNSW Lead institution Monash
Field Audiology, Speech & Language Pathology Field leader Sharynne McLeod, CSU Lead institution Uni of Queensland	Field Gastroenterology & Hepatology Field leader Behzad Hajarizadeh, UNSW Lead institution Burnet
Field Bioethics Field leader Wendy Lipworth, Uni of Sydney Lead institution Uni of Melbourne	Field Genetics & Genomics Field leader Peter Visscher, Uni of Queensland Lead institution QIMR Berghofer
Field Cardiology Field leader John Beltrame, Uni of Adelaide Lead institution Uni of Adelaide	Field Gerontology & Geriatric Medicine Field leader Christopher Cleon Rowe, Austin Lead institution UNSW



Dr Cher-Rin Chong promoted

[Dr Cher-Rin Chong](#) was recently promoted to Level B Academic by The University of Adelaide. Cher-Rin is an NHMRC Peter Doherty Biomedical Early Career Fellow in the Cardiovascular Pathophysiology and Therapeutics group at the Basil Hetzel Institute, TQEH.

BHI Research Facility Walk-Through (26 August)

As always for a clinician not particularly au fait with modern laboratory practices, it was an eye-opening experience to hear about the issues, complexities and regulations surrounding laboratory space. I was delighted to find out from Richard Bennett (University of South Australia) that our performance had certainly improved on the impressions gained twelve months ago and certainly to my untrained eye the situation was significantly more appealing, with less rubbish, waste and unnecessary equipment on obvious view.

There were, however, some areas where it is quite clear that pieces of equipment have not been used for years and should either be packed up, removed or sold. It really is important that we do not turn our laboratory space into a museum but rather into an active working laboratory. All groups should be reassessing documentation, equipment and reagents that are no longer required for their activities and have them removed on a regular basis.

Having said that, our impressions were very positive and we absolutely commend all groups for their efforts to deliver a highly professional, well cared for space which does not only the BHI but also our research enormous credit.

We look forward to a similar experience in twelve months' time. Again, it will be unannounced but hopefully just as successful.

Guy Maddern
BHI Director of Research

BHI supports The Longest Table fundraiser for 8th consecutive year

On Tuesday 22nd September BHI researchers supported The Hospital Research Foundation by holding a Longest Table fundraiser. Like many events held in 2020 across the world, our usual Longest Table format was modified to comply with current COVID19 restrictions, which included BYO coffee and an impressive array of cakes, sandwiches and sausage rolls.

Although it was not our usual lunch event, over 60 people came together to share morning tea, and everyone commented on how much they had missed face-to-face events in 2020! We were really pleased to be able to continue our tradition of an annual Longest Table.

In total \$1671 was raised, which we believe earns us a bonus \$1000 TLT donation from an anonymous THRF benefactor. The BHI held one of the first Longest Tables ever in 2013, and since that time we have fundraised over \$13,000!! Thank you to everyone who has brought food and made a donation over the last 8 years.

You can still [DONATE HERE](#) to support our Longest Table, and don't forget you can also sign up to host your own event!



Dr Beula Panchatcharam's reflections on completing her PhD at the BHI



Dr Beula Panchatcharam with her sons and husband Dr Rajan VEDIAPPAN

Congratulations to **Dr Beula Panchatcharam** on having her PhD conferred by the University of Adelaide. Beula completed her thesis, titled “*Staphylococcus aureus* exoproteins on nasal epithelial barrier in chronic rhinosinusitis” with the ENT Surgery group under the supervision of Professor PJ Wormald, and Associate Professors Alkis Psaltis and Sarah Vreugde. She was supported by a University of Adelaide International Scholarship.

Beula reflected on her time at the BHI... The wise man says “There is a time for everything, and a season for every activity under the heavens:and find satisfaction in all their toil—this is the gift of God.” Life at the Basil Hetzel Institute brought smiles, tears and I found much satisfaction in all the toil at BHI. Working at BHI was easier due to friends and the friendly atmosphere I experienced. I seemed to be lost during the initial days in 2017 after having travelled from India with my family, but thanks to the lovely staff Kathryn, Gwenda, Bec and Prue who made BHI a home for me, far away from home. My supervisors, and dynamic colleagues from the ENT Surgery group were excellent mates and made us experience the true Aussie spirit of friendship.

BHI has been an amazing place to work, I have gained immense knowledge in working towards my projects and research. It was a place of learning different cultures and knowing people from diverse backgrounds and specialities. We spent some of the most memorable times of our lives at BHI lunch meetings, “Longest Tables”, Science Alive! and school student teachings. I would like to express my heartfelt gratitude and thanks to everyone who has played a part in making my days at BHI a fruitful experience.

After completion of my 3 years, I had to leave Adelaide in a haste due to the COVID pandemic on a repatriation flight and hence could not say goodbye to many of our friends. I have returned back to India along with my family and re-joined my institution as an Associate Professor at the Department of Clinical Microbiology, Christian Medical College, Vellore, India. We are overwhelmed at the number of cases that are added every day, but by God’s grace we are able to offer our services in bringing health and healing to the ones who are suffering.

Dr Beula Subashini Panchatcharam, email: beularajan@cmcvellore.ac.in

Please welcome George Bouras to the BHI

George Bouras

Research Officer, ENT Surgery

Level 1, Basil Hetzel Institute, TQEH george.bouras@adelaide.edu.au

George is a statistician and bioinformatician. His predominant research areas are in statistical data analysis and DNA sequence analysis. He recently returned from New York City where he had been working as a stock options trader.



BHI STUDENT NEWS

BHI STUDENT REPS 2020 – 2021



Roshan Nepal (Level 1)
roshan.nepal@adelaide.edu.au



Sadik Abdella (Level 2)
sadikmahdi.abdella@mymail.unisa.edu.au

THRF BHI TQEH Scholarships

Each year The Hospital Research Foundation (THRF) funds Postgraduate, Honours and Vacation Scholarships for students based at the Basil Hetzel Institute, TQEH.

All information about these scholarships can be found [HERE](#).

The deadline for all scholarships is 4pm Friday 30 October 2020.

Please direct any enquiries to BHI Scientific Director, Associate Professor Joy Rathjen via email joy.rathjen@sa.gov.au



TOGETHER. FIGHT.

Dr Bridget Heijkoop: Masters of Philosophy (Surgery)

Congratulations to **Dr Bridget Heijkoop** for having her Masters of Philosophy (Surgery) conferred by The University of Adelaide. Bridget's thesis entitled, "Extended Thromboprophylaxis following major open abdominopelvic surgery for malignancy: A review of efficacy, safety and economic impact" was completed under the supervision of Associate Professor George Kiroff and Dr Dan Spornat.

Mindfulness sessions at the BHI

Reverend Nicholas Rundle, a qualified secular meditation teacher, is holding these sessions for BHI and TQEH staff and students each fortnight on Mondays from 12pm. Please see the flyer in the "Upcoming Events" section of this newsletter for additional information.

BHI Off the Clock

Off the Clock is on hold for the moment, but we look forward to welcoming all staff and students back in the very near future!

GENERAL INFORMATION

STATISTICIAN AT THE BHI

Suzanne is available at the BHI each Tuesday and can be consulted by TQEH/ The University of Adelaide Faculty of Health & Medical Sciences staff and research higher degree students. Support is limited to 15 hours on a per project basis.



Tuesdays
BHI Level 1
Room 1E.07
Phone: 8222 6679
suzanne.edwards@adelaide.edu.au

Suzanne Edwards
Statistical Consultant
Data, Design and Statistics
Services
Adelaide Health Technology
Assessment (AHTA)
School of Public Health
The University of Adelaide

Funding Opportunities

Expressions of interest for two new THRF funding rounds close at 4pm on Monday 12 October 2020.

THRF Prostate Cancer Round

Grants will be considered for a maximum amount of \$150,000 and for a period of no longer than two years.

Prostate cancer is a significant area of priority for THRF donors. THRF is looking for innovative projects that target any unmet need in the prevention or treatment of prostate cancer.

THRF Translational Project Grant Round

Grants will be considered for a maximum amount of \$70,000 and for a period of no longer than two years in the following targeted areas:

- Aged care
- Coronary heart disease
- Dementia (at the exception of Parkinson's Disease which is funded through our affiliate Parkinson's SA)
- Depression
- Endometriosis
- Ovarian cancer
- Paediatric solid cancer (< 18 yo)

TQEH Librarians

Due to COVID-19 and the advice to practice social distancing TQEH Librarian visits to the BHI have been postponed until further notice.

TQEH librarians anna.holasek@sa.gov.au or rachel.davey@sa.gov.au are however available to assist with your literature searches and research requirements via email, and the SALUS library site remains accessible 24/7 from any computer or device with internet access.

To access the Library Service's electronic resources you will need to [register online](#) for a SALUS username and password via the library homepage [\[https://salus.sa.gov.au\]](https://salus.sa.gov.au).

Thank you for your understanding.
TQEH Library Team



The Institute

basil hetzel institute for translational health research

TQEH Research Secretariat Contact Details
Ground Floor, (DX465101)
Basil Hetzel Institute for Translational Health Research
The Queen Elizabeth Hospital
28 Woodville Rd, WOODVILLE SOUTH 5011
Phone: 08 8222 7836 Fax: 08 8222 7872
Email: gwenda.graves@sa.gov.au

GENERAL INFORMATION CONTINUED

Pre-review service for clinical research grants

All research studies, including grant funded research, require appropriate ethics and governance approvals before they can commence. Unlike the NHMRC, many funding bodies do not utilise a peer-review system as part of their grant funding rounds. This can lead to delays in researchers obtaining the post-award approvals that are required before they can start their projects. **The CALHN Research Office is offering pre-application scientific review of clinical human research projects by the CALHN HREC Chair, Mr Ian Tindall, with a view to facilitating efficient post-award approval processes.**

For further information and submission please contact the CALHN Research Office on Health.CALHNResearchEthics@sa.gov.au or call 7117 2230

CALHN Human Research Ethics Committee 2020 Submission and Meeting Dates for Applications

A list of all meeting dates can be found on the [BHI website](#)

HREC/IDSC Submission deadlines	CALHN HREC Meeting	IDSC Meeting
Monday 14 September 2020	Thursday 8 October 2020	
Monday 28 September 2020	Thursday 22 October 2020	Thursday 22 October 2020
Monday 12 October 2020	Thursday 5 November 2020	
Monday 26 October 2020	Thursday 19 November 2020	Thursday 3 December 2020

The Central Adelaide Local Health Network Human Research Ethics Committee (CALHN HREC) will hold two meetings and with two submission deadlines each month in 2020.

The Investigational Drug Sub-Committee (IDSC) will continue to meet monthly.

Research studies involving investigational medicinal products require review and approval from both the IDSC and CALHN HREC.

ALL HREC meetings will continue to be held on Thursdays at Roma Mitchell House, Level 3, 136 North Terrace, Adelaide.

For more information please contact:

Investigational Drugs Subcommittee (IDSC) Mr Peter Siobodian or Dr Ada Lam Executive Officer, Specialist Pharmacist Phone: (08) 7074 1430 or (08) 7074 1150 peter.siobodian@sa.gov.au ada.lam@sa.gov.au	CALHN Human Research Ethics Committee (HREC) Ms Lisa Barrie CALHN HREC Level 3, Roma Mitchell House Phone: (08) 7117 2229 or (08) 8222 6841 Health.CALHNResearchEthics@sa.gov.au
---	--

Animal Ethics

Animal ethics applications go through The University of Adelaide Animal Ethics Committee.

Details of meeting and submission dates: www.adelaide.edu.au/research-services/oreci/animal/applications/

Contact details for this committee:

Amanda Camporeale, Animal Ethics Officer

Phone: 8313 6310

Email: amanda.camporeale@adelaide.edu.au

WORK, HEALTH & SAFETY

Wellbeing

Wellbeing is the ability to feel good and function effectively in all aspects of our lives.

We thrive when we consistently feel and function well and are able to effectively manage the stresses and challenges that we encounter. However an individual's wellbeing, whether physical or psychological, can fluctuate from time to time.

As such wellbeing can be considered along a continuum from poor to good. Even when we would normally rate our wellbeing highly we may find that some days we may feel depleted and tired, leading to frustration and not achieving what we want to do. Yet other days we are energetic, our physical health is good, our mental health is positive. This puts us in a good frame of mind and we are able to achieve all that we want.

With this in mind, the University of Adelaide Workplace Wellbeing Framework aims to build staff wellbeing so we all have more times feeling well and flourishing. The University of Adelaide [Wellbeing website](#) will provide staff access to information, training and assistance in areas including:

- Healthy minds
- Healthy bodies
- Healthy Environments
- Meaningful Relationships
- Financial Wellbeing
- Meaningful careers
- Wellbeing During COVID-19

Note that not all activities and information may be suitable or needed by you at this time. However consider that these activities and information are part of your wellbeing pantry, you take out what you need for now. Try out different ideas. Let go of the ones that do not assist you and keep on with the ones that help. It is up to you what you try!

Current events, activities and information for you to build your wellbeing is available via the [Wellbeing Events](#) page or sign up to their newsletter at <https://www.adelaide.edu.au/hr/hsw/wellbeing/newsletter-subscribe>

UPCOMING EVENTS



The Institute

basil hetzel institute for translational health research

TQEH Research Expo

Thursday 15 October

Location: BHI Seminar Rooms,
37a Woodville Road

1:30pm Student Mini-Oral Presentations

Friday 16 October

Location: TQEH, Level 2, Main Lecture
Theatre, 28 Woodville Road

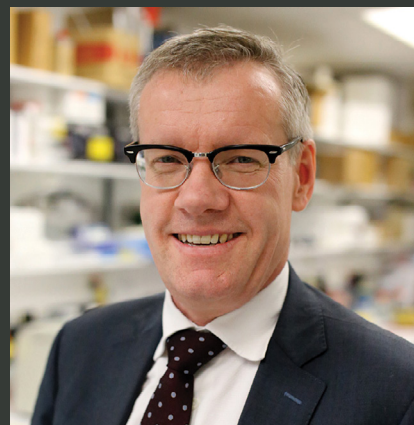
8:15am Student Oral Presentations

12pm **PLENARY LECTURE**

“Recycling Islets to Treat Diabetes”

2pm Student Oral Presentations

4pm 3MT® & Award Presentations



Professor Toby Coates

*Director of Kidney and Islet
Transplantation, RAH & Professor
of Medicine, University of Adelaide*

Full program and Zoom links
available on the BHI website

Major Sponsors



Health
Central Adelaide
Local Health Network



THE UNIVERSITY
of ADELAIDE



the hospital research
foundation group

TOGETHER. FIGHT.



University of
South Australia

UPCOMING EVENTS



The Institute

TQEH Research Expo

Thursday 15 & Friday 16 October 2020

Thursday: Student Mini-Oral Presentations

[Basil Hetzel Institute, Ground Floor Seminar Rooms, 37a Woodville Rd]

1:30pm Mini-Oral Presentations

2:50pm Afternoon tea

Friday: Student Oral Presentations & Plenary Lecture

[TQEH, Level 2, Main Lecture Theatre, 28 Woodville Rd]

8:15am Honours Students

9:15 am Junior PhD Students (Laboratory)

10:15am Morning Tea & Trade Displays

10:45am Senior PhD Students (Laboratory)

12:00pm **Plenary Lecture: Professor Toby Coates**
“Recycling Islets to Treat Diabetes”

1:00pm Lunch & Trade Displays

2:00pm Clinical Research Group 1

3:00pm Clinical Research Group 2

4:00pm 3MT® & Award Presentations

Zoom links & more information: bit.ly/2FN2XDf

Major sponsors of TQEH Research Expo



Health
Central Adelaide
Local Health Network



THE UNIVERSITY
of ADELAIDE



the hospital research
foundation group

TOGETHER. FIGHT.



University of
South Australia

UPCOMING EVENTS

Wellness and Spiritual Care

Monday Meditation Program Basil Hetzel Institute for Translational Health Research

'Meditation is the art of relaxing the body and calming the mind' (Eric Harrison)

Ground Floor Seminar Rooms, 37a Woodville Road

From 12 noon Nicholas is available to discuss meditation practices and resources.

1230 – 1250 hrs Guided Meditation

About our sessions –

- Meditation has always been part of human experience, stilling the restless mind and generating calm and focus to support good life choices.
- A typical session may include awareness of the breath, a word or a body scan. No religious or spiritual words are used allowing all to participate.
- We sit in a well-spaced circle of chairs.
- Sessions are subject to changing Covid 19 restrictions.

Dates –

7/9, 21/9, 5/10, 19/10, 2/11, 16/11, 30/11, 14/12

Contact –

Prof Benedetta C Sallustio BSc PhD FFSc(RCPA)

benedetta.sallustio@sa.gov.au

Our facilitator -

The Rev. Nicholas Rundle is the Uniting Church Chaplain at the Royal Adelaide He is an experienced, trained and accredited teacher of Meditation in its Christian and secular expressions.

For more information please contact:

T: + 61 870741122

E: nicholas.rundle@sa.gov.au



Government
of South Australia

Health
Central Adelaide
Local Health Network



www.ausgoal.gov.au/creative-commons

© Central Adelaide Local Health Network. All rights reserved

UPCOMING EVENTS

Adelaide BioMed City Webinars Tuesdays from 4:30 - 5pm

Date	Host	Chair	Theme	Presenter 1	Presenter 2
6 October	SAHMRI	Prof Derek Chew	Atherosclerosis	Dr Christina Bursill	A/Prof Peter Psaltis
13 October	SAHMRI	Prof Steve Wesselingh	Indigenous Health	Prof Alex Brown	Ms Kim Morey
20 October	UoA	Prof Andrew Zannettino	Clinical Trials	Prof Sepehr Shakib	A/Prof Tarik Sammour
27 October	UniSA	Prof Susan Hillier	Cancer	Prof Doug Brooks	Prof Greg Goodall

Join via Zoom: <https://sahmri.zoom.us/j/97270698207>

Sessions are being recorded and will be made available on the ABMC website: <https://adelaidebiomedcity.com/>

Why Study Mammographic Density? webinar series 12-15 October.

Learn all about breast density from the international experts in biology, epidemiology, clinical medicine and public health in the comfort of your home.

These are free webinars, but you must register.

To register and view the full program,
<https://mailchi.mp/b597141ff26a/why-study-md>

Session 1: Biology Chair: Kara Britt

When: Monday, October 12th, 9:00-11:30am AEDT

Session 2: Measurement and Screening Chair: Jennifer Stone

When: Tuesday, October 13th, 7:00-9:30pm AEDT

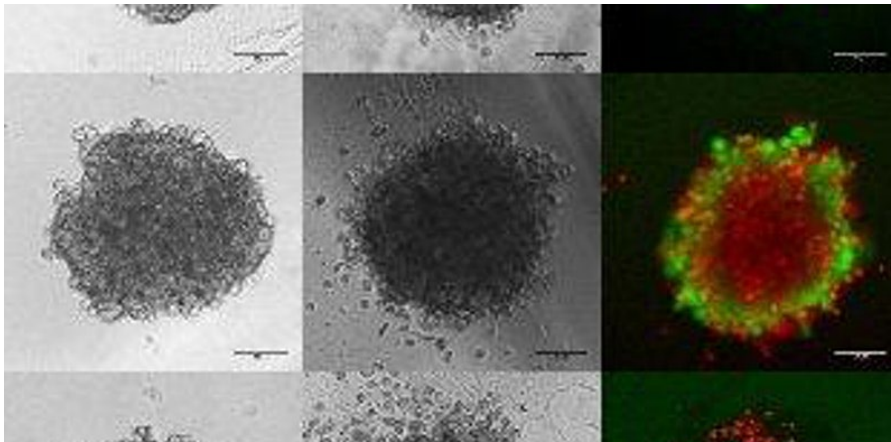
Session 3: Epidemiology and Genetics Chair: John Hopper

When: Wednesday, October 14th, 9:00-11:30am AEDT

Session 4: Public Health Policy and Community Chair: Wendy Ingman

When: Thursday, October 15th, 1:00-3:30pm AEDT

UPCOMING EVENTS



OCT 30, 2020

(2:00 PM – 5:00 PM ACDT)

PATIENT-DERIVED *IN VITRO* MODELS: ADVANCES & CHALLENGES

Bringing together scientists with a strong expertise/interest in patient-derived *in vitro* models, to get inspired and expand your network.

Proposed schedule:

2.00-2.20 pm Prof Lisa Butler

2.20-2.40 pm Prof Michael Beard

2.40-3.10 pm 3 short talks selected from abstracts (7 min + 3 min questions)

3.10-3.50 pm Poster session and networking

3.50-4.10 pm Dr Jean Winter

4.10-4.30 pm Dr Susi Woods

4.30-5.00 pm 3 short talks selected from abstracts (7 min + 3 min questions)

from 5 pm Networking TBA

This is a FREE event register at:

<https://www.eventbrite.com.au/e/patient-derived-in-vitro-models-advances-challenges-tickets-116557397313>

LOCATION

UNIVERSITY OF SOUTH AUSTRALIA, CITY WEST, HB8-18, CORNER NORTH TERRACE/MORPHETT ST BRIDGE, ADELAIDE, SA 5000

EVENT DETAILS

THIS IS CURRENTLY PLANNED AS A FACE-TO-FACE MEETING WITH LIMITED SEATING CAPACITY (55).

ZOOM-DETAILS WILL PROVIDED PRIOR TO THE EVENT.

ABSTRACTS:

SHORT TALKS/POSTERS ARE AVAILABLE

PLEASE SEND ABSTRACTS TO: MANUELA.KLINGLER-HOFFMANN@UNISA.EDU.AU

ABSTRACT DEADLINE:

OCT 15, 2020

ORGANIZING COMMITTEE

MANUELA KLINGER-HOFFMANN

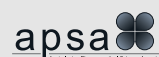
GUILLERMO GOMEZ

KEVIN FENIX

UPCOMING EVENTS

ASCEPT-APSA JOINT VIRTUAL SCIENTIFIC MEETING 2020

GLOBAL SOLUTIONS FOR GLOBAL CHALLENGES



DATE

Tuesday 24 – Thursday 26
November 2020

On behalf of the ASCEPT-APSA organising committee, we are pleased to invite you to the inaugural virtual scientific meeting from 24–26 November 2020.

SHARE YOUR LATEST RESEARCH AND KNOWLEDGE

We welcome abstracts from a broad range of research topics for an oral or e-Poster presentation.

- Cardiovascular
- Clinical Pharmacology
- Clinical Pharmacology Trainee
- Drug Discovery
- Drug Disposition and Response
- Education
- Inflammation/respiratory
- Neuro- and Behavioural Pharmacology
- Pharmacogenomics
- Pharmaceutical Science
- Pharmacoepidemiology
- Pharmacy Practice
- Urogenital and Gastrointestinal
- Toxicology

Abstract submission closes on Monday 7 September 2020

WWW.ASCEPT-APSA2020.COM
#ASCEPTAPSA2020

KEYNOTE SPEAKERS

Opening keynote

Prof Jeremy Nicholson, Murdoch University, Perth

British Pharmacological Society keynote presentation

Prof Jackie Hunter, Benevolent Bio, UK

Pharmaceutical Society of Australia (PSA) sponsored lecture

Prof Parisa Aslani, The University of Sydney

APSA lecture

Prof Tina Brock, Monash University

ASCEPT lecture

Prof Sarah Hilmer, The University of Sydney

REGISTER TO ATTEND

The first 60 registrants will have the opportunity to participate in one Meet the speaker discussion group with a keynote speaker.

Early bird registration closes **Monday 26 October 2020**

For more information about the speakers, the program and to register visit

www.ascept-apsa2020.com

Conference Secretariat

expert events
Professional conference organiser

T. +61 7 3848 2100

E. ascept-apsa2020@expertevents.com.au

PUBLICATIONS

If you wish to have a recent publication included, please send details to the BHI Communications Officer

rebecca.anderson@adelaide.edu.au

Brito-Zeron P, Acar-Denizli N, Ng W, ... Rischmueller M, et al. Epidemiological profile and north-south gradient driving baseline systemic involvement of primary Sjogren's syndrome. *Rheumatology*. 59(9):2350-2359, 2020 Sep doi.org/10.1093/rheumatology/kez578.

Cohen J, Bellomo R, Billot L, Burrell L, Evans D, Finfer S, Hammond N, Li Q, Liu D, McArthur C, McWhinney B, Moore J, Myburgh J, Peake S, Pretorius C, Rajbhandari D, Rhodes A, Saxena M, Ungerer J, Young M, Venkatesh B. Plasma cortisol, aldosterone, and ascorbic acid concentrations in patients with septic shock do not predict treatment effect of hydrocortisone on mortality: A nested cohort study. *American Journal of Respiratory & Critical Care Medicine*. 202(5):700-707, 2020 Sep. doi.org/10.1164/rccm.202002-0281OC.

Costello S, Day A, Yao C, Bryant R. Faecal microbiota transplantation (FMT) with dietary therapy for acute severe ulcerative colitis. *BMJ Case Reports*. 13(8), 2020 Aug. doi.org/10.1136/bcr-2019-233135.

Foley K, Granchi N, Reid J, Leopardi L, Maddern G. Peer coaching as a form of performance improvement: What surgeons really think. *Journal of Surgical Education*. 2020 Aug doi.org/10.1016/j.jsurg.2020.08.005.

Katz D, Love C, Kim S, Barrett T, Spornat D, Chung E. For men's problems, we need a women's approach: equality in treatment care planning. *BJU International*. 2020 Sep. doi.org/10.1111/bju.15190.

Lambell K, Miller E, Tatucu-Babet O, Peake S, Ridley E. Nutrition management of obese critically ill adults: A survey of critical care dietitians in Australia and New Zealand. *Australian Critical Care*. 2020 Aug. doi.org/10.1016/j.aucc.2020.06.005.

Prasanna T, Wong R, Price T, Shapiro J, Tie J, Wong H, Nott L, Roder D, Lee M, Kosmider S, Jalali A, Burge M, Padbury R, Maddern G, Carruthers S, Moore J, Sorich M, Karapetis C, Gibbs P, Yip D. Metastasectomy and BRAF mutation, an analysis of survival outcome in metastatic colorectal cancer. *Current Problems in Cancer*. (no pagination), 2020. Article Number: 100637. doi.org/10.1016/j.currproblcancer.2020.100637.

Sharma C, Whittle S, Haghighi P, Burstein F, Keen H. Sentiment analysis of social media posts on pharmacotherapy: A scoping review. *Pharmacology research & perspectives*. 8(5): e00640, 2020 Oct. doi.org/10.1002/prp2.640.

Wittwer M, Zeitz C, Beltrame J, Arstall M. Providing a simple and consistent solution for the definition of in- vs. out-of-hospital cardiac arrest. *Resuscitation*. 2020 Aug. doi.org/10.1016/j.resuscitation.2020.08.013.

Cheah J, Robson J, Black R, Goodman S, Lester S, Mackie S, Hill C. The patient's perspective of the adverse effects of glucocorticoid use: A systematic review of quantitative and qualitative studies. From an OMERACT working group. *Seminars in Arthritis & Rheumatism*. 50(5):996-1005, 2020 Jul. doi.org/10.1016/j.semarthrit.2020.06.019.

Han J, Eldredge T, McQuillan P, Prasad S. Rare complication of diaphragmatic hernia in a live donor nephrectomy patient. *ANZ Journal of Surgery*. 2020 Sep. doi.org/10.1111/ans.16296.

Haridy J, Iyngkaran G, Nicoll A, Muller K, Wilson M, Wigg A, Ramachandran J, Nelson R, Bloom S, Sasadeusz J, Watkinson S, Colman A, Altus R, Tilley E, Stewart J, Hebbard G, Liew D, Tse E. Outcomes of community-based hepatitis C treatment by general practitioners and nurses in Australia via remote specialist consultation. *Internal Medicine Journal*. 2020 Sep. dx.doi.org/10.1111/imj.15037.

Hill R, Butnoris M, Dowling H, Macolino K, Patel B, Simpson T, Trevillian S. Reflection on our leadership during COVID-19: challenging our resilience. *Journal of Pharmacy Practice and Research*. 50(4):294-296, 2020. Aug doi.org/10.1002/jppr.1681.

Maddern G. Evidence, not eminence, in coronavirus disease 2019. *ANZ Journal of Surgery*. 90(9):1537, 2020 Sep. doi.org/10.1111/ans.16174.

Mikaeel R, Symonds E, Kimber J, Smith E, Horsnell M, Uylaki W, Tapia Rico G, Hewett P, Yong J, Tonkin D, Jesudason D, Poplawski N, Ruszkiewicz A, Drew P, Hardingham J, Wong S, Frank O, Tomita Y, Patel D, Vatandoust S, Townsend A, Roder D, Young G, Parry S, Tomlinson I, Wittert G, Wattchow D, Worthley D, Brooks W, Price T, Young J. Young-onset colorectal cancer is associated with a personal history of type 2 diabetes. *Asia-Pacific Journal of Clinical Oncology*. 2020 Sep. doi.org/10.1111/ajco.13428.

Pathirana M, Lassi Z, Ali A, Arstall M, Roberts C, Andraweera P. Association between metabolic syndrome and gestational diabetes mellitus in women and their children: a systematic review and meta-analysis. *Endocrine*. 2020 Sep doi.org/10.1007/s12020-020-02492-1.

Ruediger C, Nguyen L, Black R, Proudman S, Hill C. Efficacy of methotrexate in polymyalgia rheumatica in routine rheumatology clinical care. *Internal Medicine Journal*. 50(9):1067-1072, 2020 Sep. doi.org/10.1111/imj.14779.

Sharma C, Whittle S, Haghighi P, Burstein F, Sa'adon R, Keen H. Mining social media data to investigate patient perceptions regarding DMARD pharmacotherapy for rheumatoid arthritis. *Annals of the Rheumatic Diseases*. 2020 Sep. doi.org/10.1136/annrheumdis-2020-217333.

Suda A, Takahashi J, Beltrame J, Berry C, Camici P, Crea F, Escaned J, Ford T, Carlos Kaski J, Kiyooka T, Metha P, Ong P, Ozaki Y, Pepine C, Rimoldi O, Safdar B, Sechtem U, Tsujita K, Yli, Noel Bairey Merz C, Shimokawa H. International prospective cohort study of microvascular angina – Rationale and design. *IJC Heart and Vasculature*. 31 Article Number:100630. 2020 Dec. doi.org/10.1016/j.ijcha.2020.100630.

70% Sold - Hurry get your tickets today!

Over 70% of tickets are already sold in the [Hospital Research Foundation Home Lottery!](#)

Purchase your ticket today for your chance to be one of **THREE MILLIONARE WINNERS!**

The success of our lotteries helps fund our programs in research and patient care including at TQEH and BHI! Encourage your friends and extended family to get on board and help support your research!

Purchase tickets at www.homelottery.com.au or visit our head office on 62 Woodville Road, Woodville.

Good luck!



The Grand Prize includes a fully-furnished home in St Peters plus \$500,000 cash!

Frighten off disease this Halloween!

Every day so many of our loved ones are fighting cancer, heart disease, stroke, dementia and other scary diseases and illnesses. This Halloween you and your family can join the fight against these deadly enemies by raising essential funds!

Choose a disease or illness to frighten off and hold a fundraiser! OR go trick-or treating and raise awareness by grabbing one of our Horrifying Halloween Kits. By fundraising for leading medical research and patient care through The Hospital Research Foundation you'll be standing with us to frighten off these diseases for good!

Funds raised through Together. Fright. will go directly to lifesaving research and patient care initiatives including at The Queen Elizabeth Hospital (TQEH) and the Basil Hetzel Institute (BHI)!

Register your Spooktacular event today! <https://togetherfright.org.au/>



Basil Hetzel Society Luncheon



The panel speakers were interviewed by THRF CEO Paul Flynn (pictured standing). L-R: A/Prof Michael Beard, Prof Simon Barry and Dr Branka Grubor-Bauk

On Thursday 10th September, we were honoured to host 100 of our valued supporters at our annual Basil Hetzel Society Thank You Luncheon.

It was a wonderful opportunity to be able to come together after a challenging year for such an enjoyable afternoon.

We were lucky enough to be joined by three of South Australia's preeminent virology and immunology experts, including the BHI's Dr Branka Grubor-Bauk, as well as Associate Professor Michael Beard and Professor Simon Barry on the topic of COVID-19.

The answered questions about the different clinical trial phases in developing a vaccine, the similarities and dangers of COVID-19 compared to existing viruses, the importance of safety when developing a vaccine, the long-term impacts of the virus on recovered patients, how long immunity may last in recovered patients, and much more.