




The Institute

basil hetzel institute for translational health research

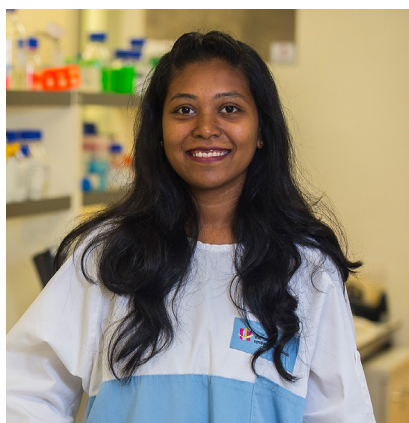
MONTHLY BULLETIN FOR TQEH RESEARCH COMMUNITY

WINNING NEWS

www.basilhetzelinstitute.com.au

Follow us 

Congratulations to Amita Ghadge for being awarded the ASMR Ross Wishart Memorial Award



Amita Ghadge, a PhD student in the Breast Biology and Cancer Unit, was awarded one of two Ross Wishart Memorial Awards at the SA Australian Society for Medical Research (ASMR) Annual Scientific Meeting held on Wednesday 9th June. Amita gave a 3 minute overview of her research at the Gala Dinner on Monday night in addition to her formal presentation at the conference. Her talk "The developmental origins of mammographic density and breast cancer risk" is based on her PhD research which she is completing at the Basil Hetzel Institute, TQEH under the supervision of Associate

Professor Wendy Ingman, Professor Rebecca Robker and Dr Pallave Dasari. Amita is currently finalising her thesis and aims to submit it in a few months.

The joint winner of the 2021 award was Dr Ella Green, also from The University of Adelaide. The Ross Wishart Memorial Award, inaugurated in 1995, recognises the significant contributions of Ross Wishart to medical research and to the Society. The Award is presented annually for the most outstanding presentation by a young researcher at the ASMR SA Annual Scientific Meeting. In addition to Amita, three other BHI based PhD students from The University of Adelaide have been awarded the ASMR Ross Wishart Memorial Award in the last 5 years: 2020 - Sarah Bernhardt (Breast Biology and Cancer Unit), 2018 - Katharina Richter (ENT Surgery) and 2017 - Bill Panagopoulos (Breast Cancer Research Unit).

Dr Maryam Nakhjavani receives Dean's Commendation for Doctoral Thesis Excellence and an Alfred Deakin Postdoctoral Fellowship

Dr Maryam Nakhjavani has received a Dean's Commendation for Doctoral Thesis Excellence from The University of Adelaide and has been awarded a highly prestigious fellowship from Deakin University in Victoria. Maryam completed her PhD with the Solid Tumour Group at the Basil Hetzel Institute, TQEH, under the supervision of Drs Jenny Hardingham and Amanda Townsend. Her thesis, titled "Ginsenoside Rg3 as a potential treatment for metastatic triple-negative breast cancer", was conferred on 26 May. During the course of her PhD studies Maryam presented at 8 national and international conferences, published 7 peer-reviewed articles and received 3 awards in addition to her Dean's Commendation. During her studies Maryam was supported by an International Wildcard Scholarship from The University of Adelaide. She writes "I am so grateful to

continued p3

JULY 2021

ISSUE 145

IN THIS ISSUE

- p 3 News
- p 5 Student News
- p 6 Community Engagement
- p 7 General Information
- p 9 Work, Health & Safety
- p 10 Publications
- p 12 THRF Group News
- p 14 Upcoming Events

BHI SEMINARS

BHI Seminars

1-2pm on Wednesdays

See [BHI website](http://www.basilhetzelinstitute.com.au) for details of invited speaker seminars.

UPCOMING EVENTS

BHI Longest Table Lunch
12pm Thursday 22 July

BHI Off the Clock
4pm Wednesday 28 July

BHI HUB

Scientific Director Joy Rathjen

BHI First Floor
Phone: 8222 6524
joy.rathjen@sa.gov.au
Work days: Tuesday - Thursday



In SA we are all hoping for the best. That is that our responses to the pandemic will keep Covid-19 controlled in SA until vaccination levels are high enough to make these responses unnecessary. As is always the case in these situations, however, it is wise to make plans for the worst. In the words of J. R. R. Tolkien – “It does not do to leave a live dragon out of your calculations, if you live near one.”

Covid-19 is today's dragon. Last year, when the state was disrupted by emergency measures, staff and students of the BHI had little time to develop plans to mitigate the impact of lockdown and to formulate alternate study plans. The impact of the pandemic is still felt in many clinical projects because patient recruitment was impacted for many months and only now are those projects returning to normal.

With clusters, community transmission and border closures currently occurring in other states, I am suggesting that BHI, TQEH higher degree by research students might undertake a little future planning. It is a time to think about how you will continue to be productive if the state goes into lockdown and working from home is required. This may be a time to talk to supervisors about a Covid plan: If the worst happens what is the most useful work I can do? What will I need to do that work? How can I best prepare now? I am not just thinking about stocking up on toilet paper, but also office supplies and programs you will need, how experimental work might be maintained with minimal contact, and material you can back-up onto clouds or drives to work on at home.

I am hoping such plans will not be necessary, but no one can guarantee that the dragon won't roar again this winter.

BHI Facility Manager Kathryn Hudson

BHI Ground Floor
Phone: 8222 7427
kathryn.hudson@sa.gov.au



BHI Communications Officer Rebecca Anderson

BHI Ground Floor
Phone: 8222 7345
rebecca.anderson@adelaide.edu.au
Work days: 9-3pm Tuesday - Thursday



NEWS

Dr Maryam Nakhjavani receives awards (continued)



L-R: Dr Jenny Hardingham and Dr Maryam Nakhjavani

my PhD supervisors, Drs Jenny Hardingham and Amanda Townsend. Their support and trust helped me put steps forward and finish the thesis with so many publications, presentations, and awards. I am so thankful to all the colleagues and friends in the Solid Tumour Group, especially Drs Eric Smith and Yoko Tomita, and to all my friends and BHI staff for providing such a friendly and supportive environment. I am also very thankful to my beloved husband, Dr Mohsen Sarafraz, for all the weekends he spent with me at BHI and all his sincere support throughout this journey."

Maryam was awarded a 2021 Alfred Deakin Postdoctoral Research Fellowship, which she commenced on June 30. These fellowships are highly competitive and provide a pathway to receive a Discovery Early Career Researcher Award (DECRA) in the future. She says that

"This fellowship provides me with a unique opportunity to work with world-class centres of research on cancer research over a two-year research program. I will work with the Institute for Mental and Physical Health and Clinical Translation (IMPACT), while continuing my research in the school of medicine at Deakin University. In this project I will be developing the next generation of aptamers for the treatment of breast cancer with a special focus on brain metastasis. I will be working with Associate Professor Sarah Shigdar, an experienced scientist and world-leading expert, who is recognised internationally as the President of the International Society on Aptamers (INSOAP). This is an excellent opportunity for me, as a Doctor of Pharmacy (PharmD), to grow in the field of anticancer drug development."

Leadership workshops run at the BHI, TQEH



Current and future leaders at the BHI, TQEH, were able to attend workshops run by Hugh Kearns from [ThinkWell](#) (photo, far left) thanks to funding from The Hospital Research Foundation Group. The Director of Research at the BHI, TQEH, **Professor Guy Maddern** writes "I recently had the pleasure of attending the 'Building Research Leaders' workshop conducted within the BHI. I was not entirely sure what I was attending or exactly at whom it was pitched, but the audience of 25 individuals covering all the areas within the BHI, from both senior and experienced to young and developing, led for a dynamic room and dynamic discussion.

Much of the work revolved around issues that we all wrestle with on a day-to-day basis. In particular, what the workshop helped do was not only share with a group of like-minded and similarly challenged individuals the fact that none of us had got our research leadership and progress working perfectly, but it also gave us the opportunity to receive some guidance and instruction on how to encapsulate the issues and potentially work through some of the solutions put forward by our facilitator.

If one has an opportunity in the future to attend such a workshop I would strongly encourage it. I think it is valuable no matter what stage you are in your career, and the ability to provide some structure, explanation and approach for the challenges that continue to assail us is invaluable."

Please welcome new staff members



Oveis Pourmehran

Level 1 BHI oveis.pourmehran@adelaide.edu.au

Postdoctoral Researcher

ENT Surgery

Oveis submitted his PhD in Mechanical Engineering, which involved some research with the ENT Surgery group, to The University of Adelaide in May. He is working on developing a novel nebuliser to improve drug delivery to the paranasal sinuses using a tailored acoustic wave.



Jancy Roy

Level 2 BHI jancy.roy@sa.gov.au

Clinical Trials Nurse

Vascular Surgery Research Group

Jancy has 37 years of nursing experience, including leadership and managerial roles, in a wide range of hospital departments in India, Saudi Arabia, the UK as well as Australia. She has worked as a clinical nurse in the vascular ward at the Royal Adelaide Hospital (RAH) since 2007. Her new role as a Clinical Trials nurse will be based at TQEH and the RAH.



Dr Pablo Valtanen

Level 1 BHI pablo.valtanen@adelaide.edu.au

Postdoctoral Researcher

Viral Immunology Group

Pablo completed his PhD at the Universidad Miguel Hernandez in Elche, Spain, in 2014. More recently he has worked at the University of South Australia as a postdoc and has been volunteering with the Viral Immunology Group since January.

Next ABMC Webinar to feature BHI, TQEH researchers: Tuesday 6 July

The next Adelaide BioMed City (ABMC) webinar at 4:30pm on Tuesday 6 July features “CALHN on Breast Cancer” in a session chaired by **Professor Guy Maddern**, Director of Research at the BHI, TQEH. **Associate Professor Wendy Ingman**, research leader of the Breast Biology and Cancer Unit, and **Professor Betty Sallustio**, research leader of the Clinical Pharmacology Research Group, will be presenting. For more details, please refer to the flyer on page 14 of this newsletter.

BHI STUDENT NEWS

BHI STUDENT REPS
2020 – 2021



Roshan Nepal (Level 1)
roshan.nepal@adelaide.edu.au



Ghais Houtak (Level 1)
ghais.houtak@adelaide.edu.au



Sarena La (Level 2)
sarena.la@adelaide.edu.au

30th TQEH Research Expo Abstracts due 9 August

Please refer to the flyer on page 15 of this newsletter, and the [BHI website](#) for more details. All students are encouraged to attend the following information session:

Wednesday 7 July, following the 1pm student seminar
BHI ground floor seminar rooms
BHI Scientific Director, Associate Professor Joy Rathjen
“Useful tips for writing abstracts and lay descriptions”

Welcome to new students based at the BHI, TQEH



Harrison Bolt
Level 1 BHI harrison.bolt@adelaide.edu.au
Master of Philosophy (Surgery) Student, The University of Adelaide
ENT Surgery
Supervisors: Professor Alkis Psaltis, Professor PJ Wormald and Associate Professor Sarah Vreugde
Thesis title: Understanding the immunoepigenetic function of mucosal epithelial cell FOXP3 expression in chronic inflammatory sinonasal disease



Dr Nikki Yeo
TQEH nikki.yeo@adelaide.edu.au
PhD Student, The University of Adelaide
Intensive Care Medicine Research Group
Supervisors: Associate Professor Adam Deane (Royal Melbourne Hospital), Dr Benjamin Reddi (Royal Adelaide Hospital)
Thesis title: Optimising end-of-life care during critical illness

BHI Off the Clock

All staff and students are welcome to attend these informing gatherings that are held on the last Wednesday of each month. The next event will be held in the Ground Floor Seminar Rooms from 4pm on Wednesday 28th July.

COMMUNITY ENGAGEMENT

Cure4 Cystic Fibrosis Foundation (Cure4CF)

The [Cure4 Cystic Fibrosis Foundation](#) (Cure4CF) held a special evening of philanthropy and iconic Australian Wines at Penfolds Magill Estate recently. Guests were invited to learn more about the good work of the Foundation and their unique approach to funding a cure for cystic fibrosis. Cure4CF funded researchers **Professor PJ Wormald** and **Associate Professor Sarah Vreugde** from the ENT Surgery group at the BHI, TQEH, attended and were able to share with guests the aims and outcomes of their research projects.



L-R: Megan Webster-Bradman, PJ Wormald, Jacinta Connell and Sarah Vreugde



L-R: Sarah Vreugde with Jo Close, Cure4CF Director

1000 Birthing Kits assembled at the BHI



L-R: BHI researchers Olivia Girolamo, Armin Muminovic, Zahraa Al-Delfi, Dr Neil McMillan (and baby Elise), Zuhal Naderi, Bimala Dhakal, Dr Prue Cowled, Roshan Nepal and Martha Menberu

The [Zonta Club](#) is an international service organisation that supports women in many different ways. One of the projects that **Dr Prue Cowled's** Zonta club (Adelaide Torrens) has been closely involved in for many years is the assembly of Birthing Kits for the [Birthing Kit Foundation](#). On Saturday 19 June around 30 people, including members and friends of Prue's Zonta Club, together with BHI researchers, gathered in the BHI seminar rooms and assembled 1000 birthing kits in under 3 hours. These kits give women in developing countries the best chance of a clean birth and a healthy baby.

GENERAL INFORMATION

STATISTICIAN AT THE BHI

Suzanne is available at the BHI each Tuesday and can be consulted by TQEH/ The University of Adelaide Faculty of Health & Medical Sciences staff and research higher degree students. Support is limited to 15 hours on a per project basis.



Tuesdays

BHI Level 1

Room 1E.07

Phone: 8222 6679

suzanne.edwards@adelaide.edu.au

Suzanne Edwards

Statistical Consultant

Data, Design and Statistics Services

Adelaide Health Technology Assessment (AHTA)

School of Public Health

The University of Adelaide

BHI's Longest Table Lunch



The Longest Table is The Hospital Research Foundation Group's annual cancer fundraiser. Each year since it began in 2013 the Basil Hetzel Institute has hosted an event which makes this our 9th consecutive year. We hope you can all donate and bring a plate of food to share!

When: 12pm, Thursday 22 July 2021

Where: The Atrium, Basil Hetzel Institute

What: Donate and bring a plate of food to share! Each person attending should make a donation to The Longest Table via the link below, and show off their cooking skills (or visit the local shops!). And if you can't make the lunch, you're still welcome to donate!

<https://www.thelongesttable.com.au/table/bhi/>



TQEH Librarians

Every Wednesday a TQEH librarian, Anna or Rachel, visits the BHI (Room 1E.07). These librarians are from the SA Health Library Service, The Queen Elizabeth Hospital campus, and are available to assist you with constructing suitable literature and database searches for your research and help you obtain relevant material.

Please contact TQEH librarians anna.holasek@sa.gov.au or rachel.davey@sa.gov.au to arrange a Wednesday morning meeting, or another time at TQEH Library on level 5B of the Main Tower.

Alternatively, visit the library website at SALUS [<https://salus.sa.gov.au>] to view our services and resources or use the quick online chat option to contact us.

Please [register online](#) for a SALUS username and password to access online library resource.

GENERAL INFORMATION CONTINUED

Pre-review service for clinical research grants

All research studies, including grant funded research, require appropriate ethics and governance approvals before they can commence. Unlike the NHMRC, many funding bodies do not utilise a peer-review system as part of their grant funding rounds. This can lead to delays in researchers obtaining the post-award approvals that are required before they can start their projects. **The CALHN Research Office is offering pre-application scientific review of clinical human research projects by the CALHN HREC Chair, Mr Ian Tindall, with a view to facilitating efficient post-award approval processes.**

For further information and submission please contact the CALHN Research Office on Health.CALHNResearchEthics@sa.gov.au or call 7117 2230

CALHN Human Research Ethics Committee 2021 Submission and Meeting Dates for Applications

A list of all meeting dates can be found on the [BHI website](#)

HREC/IDSC Submission deadlines	CALHN HREC Meeting	IDSC Meeting
Monday 7 June 2021	Thursday 1 July 2021	
Monday 21 June 2021	Thursday 15 July 2021	Thursday 22 July 2021
Monday 5 July 2021	Thursday 29 July 2021	
Monday 19 July 2021	Thursday 12 August 2021	

The Central Adelaide Local Health Network Human Research Ethics Committee (CALHN HREC) will hold two meetings and with two submission deadlines each month in 2021.

The Investigational Drug Sub-Committee (IDSC) will continue to meet monthly.

Studies involving early phase trial of investigational medicinal products require review and approval from both the IDSC and CALHN HREC.

Supporting documents are to be submitted to CALHN HREC via email
Health.CALHNResearchEthics@sa.gov.au

For more information please contact:

Investigational Drugs Subcommittee (IDSC) Mr Peter Siobodian or Dr Ada Lam Executive Officer, Specialist Pharmacist Phone: (08) 7074 1430 or (08) 7074 1150 peter.siobodian@sa.gov.au ada.lam@sa.gov.au	CALHN Human Research Ethics Committee (HREC) Ms Lisa Barrie CALHN HREC Level 3, Roma Mitchell House Phone: (08) 7117 2229 or (08) 8222 6841 Health.CALHNResearchEthics@sa.gov.au
---------------------------------------------------------------------------------------------------------------------------------------------------------------------------------------------------------------------------------------------------------------------------------------------------------------------	------------------------------------------------------------------------------------------------------------------------------------------------------------------------------------------------------------------------------------------------------------------

Animal Ethics

Animal ethics applications go through The University of Adelaide Animal Ethics Committee.

Details of meeting and submission dates: www.adelaide.edu.au/research-services/oreci/animal/applications/

Contact details for this committee:

Amanda Camporeale, Animal Ethics Officer

Phone: 8313 6310

Email: amanda.camporeale@adelaide.edu.au

WORK, HEALTH & SAFETY

Room & Equipment contacts at the BHI

The BHI utilises shared spaces, defined on function rather than departmental boundaries, in both the laboratory and office spaces. In order to manage this space and provide a contact person and information conduit the BHI uses “room & equipment contacts”. Ideally, the contact people are staff members who use the equipment or room regularly, and who have a vested and active role in making sure the area and equipment is well maintained and in good condition.

The room contacts are posted outside each room. Before using a room or item of equipment users should make sure they have talked to the contact person for general information about use and to ascertain if there are any special training requirements or protocols to follow. The room contact is also the person you should speak to if there are any equipment breakdowns in that room, and they will liaise with Biomed (Liam) to coordinate repairs.

In contributing to the collaborative environment at the BHI and as a condition of occupancy in the BHI we expect all staff to nominate for a responsibility, students do not need to nominate for a position.

While the ‘room contacts’ provide a convenient method of communication, in some cases they also serve an important OHS function. The BHI utilises centralised training records for ‘high risk’ activities. The centralised training record is usually posted near the equipment, using one single training mechanism with defined ‘trainers’. This results in a consistent training ‘message’ being delivered to all new staff and students. No staff or student will be entitled to use equipment unless they are listed on the centralised training record.

I would like to stress that room contacts and centralised training records are provided to support supervisors and does not replace supervision responsibilities of departments and nominated supervisors. I would also ask that supervisors work with the BHI Management Committee and OHS reps in ensuring the centralised training records are used and respected.

Kathryn Hudson

BHI Facility Manager

kathryn.hudson@sa.gov.au

PUBLICATIONS

If you wish to have a recent publication included, please send details to the BHI Communications Officer

rebecca.anderson@adelaide.edu.au

Bernhardt S, Dasari P, Glynn D, Townsend A, Price T, Ingman W. Comparison of hormone-induced mRNA and protein biomarker expression changes in breast cancer cells. *Breast Cancer Research & Treatment*. 2021 May. doi.org/10.1007/s10549-021-06254-z.

Carson-Chahhoud K, Schultz T, Kopsaftis Z, Brinn M, Barton C, Ali A, Smith B, Walters E, Sharrad K. Asthma self management education with regular healthcare professional review or written action plans or both in adults. *Cochrane Database of Systematic Reviews*. (5) Article Number: CD009479. 2021 May. doi.org/10.1002/14651858.CD009479.pub2.

Cribb B, Kollias V, Hawkins R, Ganguly T, Edwards S, Hewett P. Increased risk of complications in smokers undergoing reversal of diverting ileostomy. *ANZ Journal of Surgery*. 2021 May. doi.org/10.1111/ans.16973.

Guccione L, Gough K, Drosdowsky A, Price T, Pavlakis N, Wyld D, Ransom D, Michael M, Schofield P. The unmet supportive care needs, quality of life, and care experiences of patients with functioning and non-functioning Neuroendocrine tumours (NETs) at early diagnosis. *Patient Education & Counseling*. 2021 May. doi.org/10.1016/j.pec.2021.05.006.

Inacio M, Lang C, Bray S, Visvanathan R, Whitehead C, Griffith E, Evans K, Corlis M, Wesselingh S. Health status and healthcare trends of individuals accessing Australian aged care programmes over a decade: the Registry of Senior Australians historical cohort. *Internal Medicine Journal*. 51(5):712-724, 2021 May. doi.org/10.1111/imj.14871.

Rischin A, Liew D, Black R, Fletcher A, Buchbinder R, Lassere M, March L, Robinson P, Hill C, ARAD Steering Committee. Healthcare access and attitudes towards telehealth during the early phase of the COVID-19 pandemic among an Australian cohort with inflammatory arthritis. *Internal Medicine Journal*. 51(5):788-792, 2021 May. doi.org/10.1111/imj.15309.

Roberts G, Pegoli M, Grzeskowiak L, Benger S, Forbes H, Hunt K, Jafari S, Koeper I, McDonald C, Nguyen H, Rawther K, Taeuber L, Tran E, Vu P, Wisdom A, Russell P. Hospital admission as a deprescribing triage point for patients discharged to Residential Aged Care Facilities. *Age & Ageing*. 2021 May. doi.org/10.1093/ageing/afab082.

Shimokawa H, Suda A, Takahashi J, Berry C, Camici P, Crea F, Escaned J, Ford T, Yli E, Kaski J, Kiyooka T, Mehta P, Ong P, Ozaki Y, Pepine C, Rimoldi O, Safdar B, Sechtem U, Tsujita K, Yasuda S, Beltrame J, Merz CNB. Clinical characteristics and prognosis of patients with microvascular angina: an international and prospective cohort study by the Coronary Vasomotor Disorders International Study (COVADIS) Group. *European Heart Journal*. 2021 May. doi.org/10.1093/eurheartj/ehab282.

Surendran S, Samuel A, Yacob M, Abraham V, Gnanamuthu B, Samarasam I. Minimally invasive surgery for adult oesophageal duplication cysts: Clinical profile and outcomes of treatment from a tertiary care centre and a review of literature. *Journal of Minimal Access Surgery*. 2021 May. doi.org/10.4103/jmas.JMAS_137_20.

Tomita Y, Smith E, Palethorpe H, Nakhjavani M, Yeo K, Townsend A, Price T, Yool A, Hardingham J. In vitro synergistic inhibition of HT-29 proliferation and 2H-11 and HUVEC tubulogenesis by bacopaside i and ii is associated with Ca²⁺ flux and loss of plasma membrane integrity. *Pharmaceuticals*. 14(5) Article Number: 436 2021 May. doi.org/10.3390/ph14050436.

Tuli J, Ramezanpour M, Cooksley C, Psaltis A, Wormald P-J, Vreugde S. Association between mucosal barrier disruption by *Pseudomonas aeruginosa* exoproteins and asthma in patients with chronic rhinosinusitis. *Allergy*. 2021 May. doi.org/10.1111/all.14959.

Al-Qurain A, Williams D, Mackenzie L, Roberts M, Wiese M. Simultaneous LC-MS/MS quantification of oxycodone, tramadol and fentanyl and their metabolites (noroxycodone, oxymorphone, O- desmethyltramadol, N-desmethyltramadol, and norfentanyl) in human plasma and whole blood collected via venepuncture and volumetric absorptive micro sampling. *Journal of Pharmaceutical & Biomedical Analysis*. 203:114171, 2021 May. doi.org/10.1016/j.jpba.2021.114171.

Arnold J, Halstead J, Grainger A, Keenan A, Hill C, Redmond A. Foot and leg muscle weakness in people with midfoot osteoarthritis. *Arthritis Care & Research*. 73(6):772-780, 2021 Jun. doi.org/10.1002/acr.24182.

Barker A, Arthur A, DeNichilo M, Panagopoulos R, Gronthos S, Anderson P, Zannettino A, Evdokiou A, Panagopoulos V. Plant-derived soybean peroxidase stimulates osteoblast collagen biosynthesis, matrix mineralization, and accelerates bone regeneration in a sheep model. *Bone Reports*. 14, Article Number: 101096. 2021 Jun. doi.org/10.1016/j.bonr.2021.101096.

Klotz T, Maddern G, Caplash Y, Wagstaff M. Devices measuring transepidermal water loss of the skin: A systematic review protocol of measurement properties. *JBI Evidence Synthesis*. 2021 Jun. doi.org/10.11124/JBIES-20-00468.

Omling S, Houssami N, McGeechan K, Zackrisson S, Jacklyn G, Walters D, Barratt A, Farber R. The management of women with ductal carcinoma in situ of the breast in Australia and New Zealand between 2007 and 2016. *ANZ Journal of Surgery*. 2021 Jun. doi.org/10.1111/ans.16970.

Santos-Paulo S, Costello S, Forster S, Travis S, Bryant R. The gut microbiota as a therapeutic target for obesity: a scoping review. *Nutrition Research Reviews*. 1-33, 2021 Jun. doi.org/10.1017/S0954422421000160.

Skoulidis F, Li B, Dy G, Price T, Falchook G, Wolf J, Italiano A, Schuler M, Borghaei H, Barlesi F, Kato T, Curioni-Fontecedro A, Sacher A, Spira A, Ramalingam S, Takahashi T, Besse B, Anderson A, Ang A, Tran Q, Mather O, Henary H, Ngarmchamnanrith G, Friberg G, Velcheti V, Govindan R. Sotorasib for lung cancers with KRAS p.G12C mutation. *New England Journal of Medicine*. 2021 Jun. doi.org/10.1056/NEJMoa2103695.

PUBLICATIONS CONTINUED

If you wish to have a recent publication included, please send details to the BHI Communications Officer
rebecca.anderson@adelaide.edu.au

Tran L, Sharrad K, Kopsaftis Z, Stallman H, Tai A, Spurrier N, Esterman A, Carson-Chahhoud K. Pharmacological interventions for the treatment of psychological distress in patients with asthma: a systematic review and meta-analysis. *Journal of Asthma*. 58(6):759-769, 2021 Jun. doi.org/10.1080/02770903.2020.1731826.

Yao A, George D, Ranawat V, Wilson C. 3D printed acetabular components for complex revision arthroplasty. *Indian Journal of Orthopaedics*. 55(3):786-792, 2021 Jun. doi.org/10.1007/s43465-020-00317-x.

Dunn C, Hong W, Gibbs P, Ackland S, Sjoquist K, Tebbutt N, Price T, Burge M. Personalizing first-line systemic therapy in metastatic colorectal cancer: Is there a role for initial low-intensity therapy in 2021 and beyond? A perspective from members of the Australasian Gastrointestinal Trials *Clinical Colorectal Cancer*. 2021 May. doi.org/10.1016/j.clcc.2021.05.001.

Gebremichael L, Suppiah V, Wiese M, Mackenzie L, Phillips C, Williams D, Roberts M. Efficacy and safety of statins in ethnic differences: A lesson for application in Indigenous Australian patient care. *Pharmacogenomics*. 2021 Jun. doi.org/10.2217/pgs-2020-0152.

Kovoor J, Maddern G. One small step: Starting a career in surgical research during COVID-19. *ANZ Journal of Surgery*. 91(6):1059-1060, 2021 Jun. doi.org/10.1111/ans.16911.

Ong D, Cribb B, Marshall-Webb M, Yong J. Rare cystic mesenteric mass of the small bowel: Mesenteric lymphangioma. *ANZ Journal of Surgery*. 91(6):E417-E418, 2021 Jun. doi: 10.1111/ans.16434.

Patiniott P, Reid J, Maloney R, Karatassas A, Maddern G. Elective abdominal wall hernia repair surgical mortality-A systematic review of the literature and peer review of mortality in Australia. *ANZ Journal of Surgery*. 2021 Jun. doi.org/10.1111/ans.16977.

Pfytzner J. The need to better understand the physiology of lung collapse during one-lung ventilation. *Canadian Journal of Anaesthesia*. 2021 Jun. doi.org/10.1007/s12630-021-02040-z.

Selby P, Shakib S, Peake S, Warner M, Yeung D, Hahn U, Roberts J. A systematic review of the clinical pharmacokinetics, pharmacodynamics and toxicodynamics of ganciclovir/valganciclovir in allogeneic haematopoietic stem cell transplant patients. *Clinical Pharmacokinetics*. 60(6):727-739, 2021 Jun. doi.org/10.1007/s40262-020-00982-z.

Tieu J, Lester S, Raymond W, Keen H, Hill C, Nossent J. Mortality and cause of death in patients with AAV/PAN in Australia-a population-based study. *Rheumatology*. 2021 Jun. doi.org/10.1093/rheumatology/keab469.

Yeon J, Oakley A, Olsson A, Drummond C, Veysey E, Marshman G, Saunders H, Opie J, Bradford J, Cole J, DeAmbrosis K, Cook K, Pepall L, Eva LJ, Sladden M, Selva-Nayagam P, Phillips R, Ball S, Hill S, Bohl T, Day T, Lee G, Fischer

G. Vulval lichen sclerosus: An Australasian management consensus. *Australasian Journal of Dermatology*. 2021 Jun. doi.org/10.1111/ajd.13594.

Zou D, Wang H, Liu X, Xu Z, Roberts M, Zhao C. Artificial cells for the treatment of liver diseases. *Acta Biomaterialia*. 2021 Jun. doi.org/10.1016/j.actbio.2021.06.012.

Barbaro A, Asokan G, Trochsler M. Neuroendocrine tumour within a Meckel's diverticulum. *ANZ Journal of Surgery*. 2021 Jun. doi.org/10.1111/ans.17022.

Cai G, Aitken D, Laslett L, Hill C, Wluka E, March L, Cicuttini F, Pelletier P, Martel-Pelletier J, Jones G. The association between change in bone marrow lesion size and change in tibiofemoral cartilage volume and knee symptoms. *Rheumatology*. 60(6):2791-2800, 2021 Jun. doi.org/10.1093/rheumatology/keaa716.

Chua G, Cyna A. Satisfaction measures in pediatric anesthesia and perioperative care. *Paediatric Anaesthesia*. 31(7):746-754, 2021 Jul. doi.org/10.1111/pan.14197.

Moran J, Santamaria J, Duke G, Australian & New Zealand Intensive Care Society (ANZICS) Centre for Outcomes & Resource Evaluation (CORE). Modelling hospital outcome: problems with endogeneity. *BMC Medical Research Methodology*. 21(1):124, 2021 Jun. doi.org/10.1186/s12874-021-01251-8.

Nakhjavani M, Smith E, Yeo K, Tomita Y, Price T, Yool A, Townsend A, Hardingham J. Differential antiangiogenic and anticancer activities of the active metabolites of ginsenoside Rg3. *Journal of Ginseng Research*. 2021. doi.org/10.1016/j.jgr.2021.05.008.

Suzuki M, Ramezanpour M, Cooksley C, Ogi K, Psaltis A, Nakamaru Y, Homma A, Wormald P-J, Vreugde S. Metallothionein-3 is a clinical biomarker for tissue zinc levels in nasal mucosa. *Auris, Nasus, Larynx*. 48(5):890-897, 2021 Oct. doi.org/10.1016/j.anl.2021.01.019.

Tibrewal P, Allison S, Looi C, Lewin H, Kanigere M, Bastiampillai T. A perfected mismatch: Are prevention and recovery care services really comparable to acute inpatient units? *Australian & New Zealand Journal of Psychiatry*. 55(7):730-731, 2021 Jul. doi.org/10.1177/00048674211011247.

Visvanathan R, Ranasinghe D, Lange K, Wilson A, Dollard J, Boyle E, Jones K, Chesser M, Ingram K, Hoskins S, Pham C, Karnon J, Hill K. Effectiveness of the wearable sensor based Ambient Intelligent Geriatric Management System (AmbIGeM) in preventing falls in older people in hospitals. *Journals of Gerontology Series A-Biological Sciences & Medical Sciences*. 2021 Jun. doi.org/10.1093/gerona/glab174.

TOGETHER. FIGHT.

MasterChef star Callum Hann's most important cook to save lives



South Australian chef and MasterChef star Callum Hann (pictured left) has an appetite to fight cancer – and he's using his passion for cooking and personal connection to this heartbreaking disease to raise as many funds as possible by hosting a Longest Table!

As an Ambassador for The Longest Table, Callum is thrilled to be joining other hosts to Bite to Fight against cancer in memory of his loving father who passed away when Callum was just 16 years old.

"Like so many people, cancer has hit home pretty close for me after losing my dad. He's also the reason I became passionate about cooking in the first place," Callum said.

Callum is using his culinary cooking skills to develop a unique menu, treating his foodie friends to a delicious spread which will all be cooked over fire.

"I'll be organising some locally sourced delicious ingredients prepared over coals which will be the perfect winter feast. I love the idea of using a social occasion to raise awareness for a cause close to my heart at the same time," Callum said.

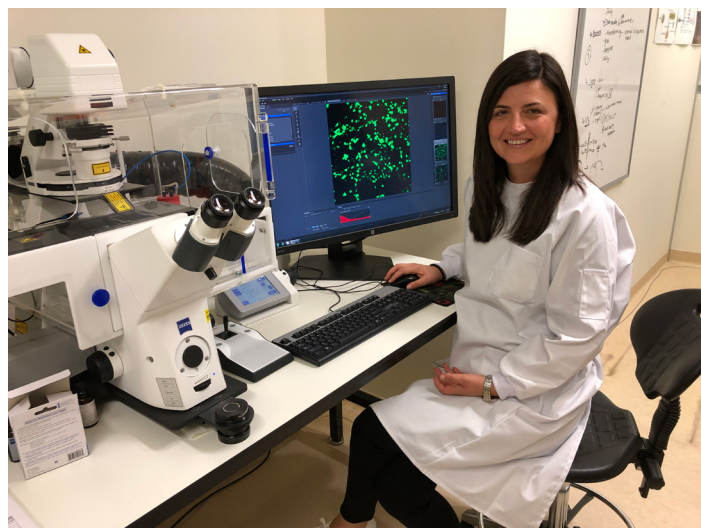
Register today www.thelongesttable.com.au and join Callum as we #BitetoFight against cancer!

SA researchers submit paper examining COVID-19 immunity

A non-peer reviewed [preprint of the paper](#) has been released, stating our body's immune system does maintain the memory to COVID-19 (also known as SARS-CoV-2 virus) 12 months later.

The study was led by **Dr Branka Grubor-Bauk** (pictured right) and Professor Simon Barry from the University of Adelaide, the Basil Hetzel Institute and Robinson Research Institute; in collaboration with clinicians and researchers from the RAH, SA Pathology, TQEH, SAHMRI, the Kirby Institute and UNSW, as well as renowned international COVID-19 immunologists from University of California and La Jolla Institute for Immunology (USA).

The research was supported by The Hospital Research Foundation (THRF) Group; Women's & Children's Hospital Foundation; and private and public donations through THRF's 'Fund The Fight' campaign last year.





Last chance to win in The Hospital Research Foundation Home Lottery

Winning the Grand Prize in [The Hospital Research Foundation Home Lottery](#) means you can live with no mortgage and no worries!

You have the chance to enjoy beachfront living, gorgeous sunsets from your living room and also \$1 MILLION cash!

Purchase your ticket by midnight this Friday!

Visit www.homelottery.com.au.

Centre for Creative Health Art Prize

There's still time to enter the Centre for Creative Health Art Prize! Entries of 2 and 3-dimensional works responding to themes of Healing are invited from South Australian-based artists.

The non-acquisitive award is open in three categories:

- Main Prize category: \$40,000
- Emerging Artist category: \$5,000
- Veterans and Emergency First Responders: \$5,000 - Proudly sponsored by Dr Helen McLean AM in memory of her father who served.

A \$1,000 People's Choice award will also be offered.

An exhibition of finalists' work will be held at Light Square Gallery, Adelaide from **27 September to 22 October 2021**. The Centre for Creative Health is part of THRF Group.

[Click here for more information](#)



\$75,000 grant to help children with dementia and their families



Greta with her mother Olivia and brother Fergus

Transforming the quality of life, care and research for hundreds of children suffering dementia, caused by more than 70 genetic disorders, will be the focus of a \$75,000 grant from THRF Group.

The funding will help increase awareness about the debilitating and fatal condition that impacts around **1 in 2,800** babies and their loved ones in Australia every year. There are currently around **2,300 children** living with dementia with a devastating prognosis, like 6-year-old Greta.

Greta was diagnosed with Rett Syndrome when she was just three years' old after her mother Olivia noticed Greta wasn't achieving her developmental milestones.

Her mother, Olivia says: "I want Greta to be included in 'normal' life. This generous grant given to the Childhood Dementia Initiative from The Hospital Research Foundation is amazing. Firstly, I believe that knowledge is power. The more people who are aware of these rare diseases and syndromes, the more power they have in the community." [Read more](#)

UPCOMING EVENTS

Adelaide Biomed City Mini-Reviews

Past ABMC Mini-Reviews can be [viewed online](#).

Join via Zoom: sahmri.zoom.us/j/89356324895



Adelaide BioMed City

ABMC Research Mini-Reviews

CALHN on Breast Cancer

Tuesday 6 July
4:30-5:00pm (ACDT)

Join our weekly webinar to find out about current research activities within the ABMC precinct.

Sessions are also recorded & available on ABMC Website for later viewing.

Associate Professor Wendy Ingman

Improving breast health across the life course

Professor Benedetta Sallustio

New therapeutic approaches to preventing heart damage during chemotherapy in breast cancer patients

Chaired by
Professor Guy Maddern

UPCOMING EVENTS CONTINUED

Call for Abstracts



The Institute

basil hetzel institute for translational health research

30th TQEH Research Expo Thursday 14 & Friday 15 October 2021

Basil Hetzel Institute, The Queen Elizabeth Hospital, Woodville South



Abstract deadline: 5pm Monday 9 August 2021

- Eligibility: Students/Researchers in Training based at TQEH precinct
- Prizes: over \$5,000 on offer in multiple categories
- Abstract submission: follow instructions on the BHI website

[basilhetzelinstitute.com.au](https://www.basilhetzelinstitute.com.au)



THE UNIVERSITY
of ADELAIDE



the hospital research
foundation group

TOGETHER. FIGHT.



University of
South Australia